

POSTOAKMOTORS.COM

THEPOSTOAKCOLLECTION.COM

# PINNACLE



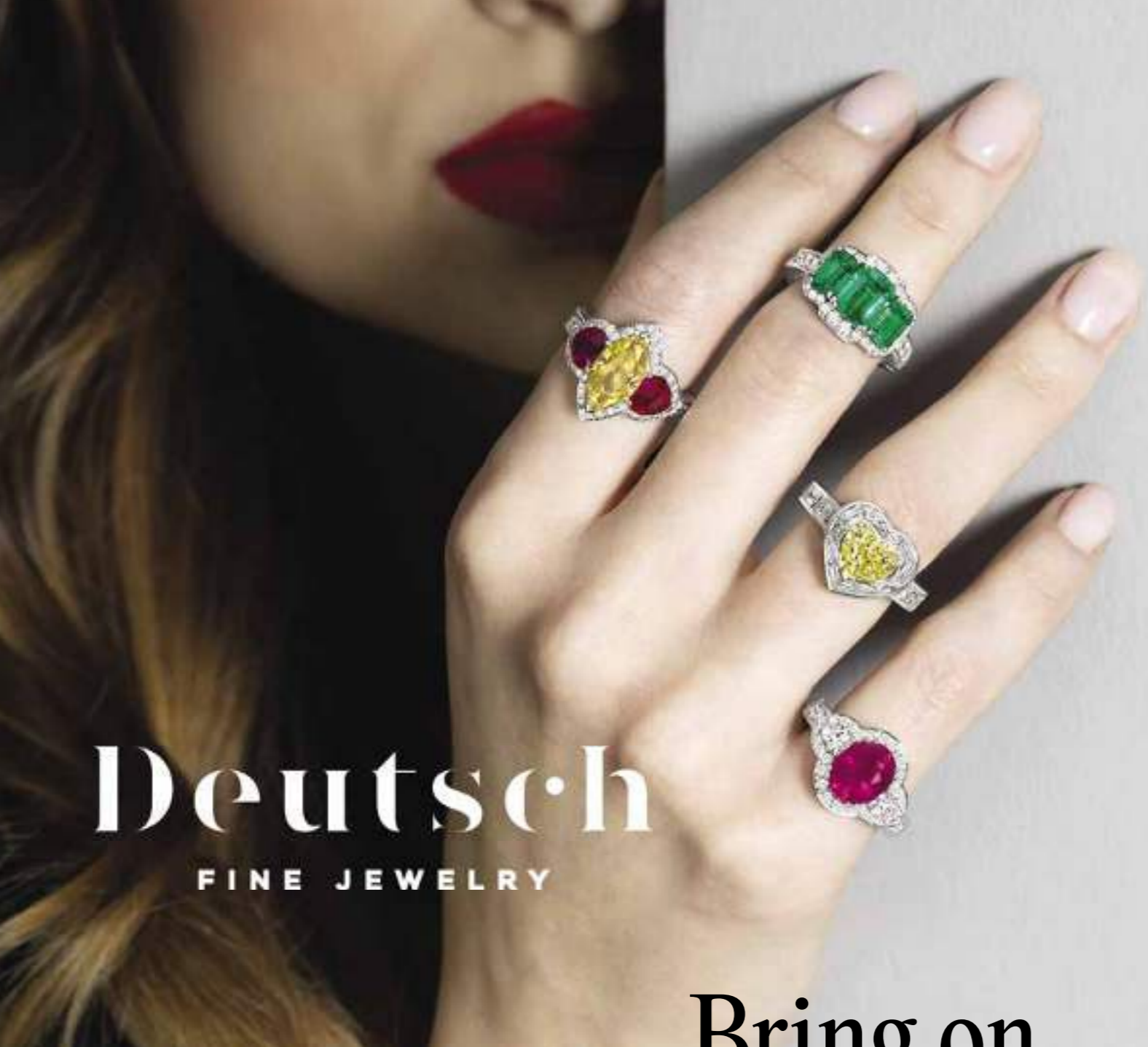
THE POST OAK  
COLLECTION

POST OAK MOTOR CARS A TILVAN CERTITTA COMPANY



de **BOULLE**

Dallas | Houston  
deBoulle.com



Deutsch  
FINE JEWELRY

Bring on  
the *bold.*



Discover prismatic  
perspectives at  
Deutsch Fine Jewelry.



3747 WESTHEIMER AT WESLAYAN  
DEUTSCHHOUSTON.COM




KARMA



## WELCOME TO OUR WORLD



**Lonny Soza – President, Post Oak Motor Cars**

I am honored to extend a heartfelt welcome to you on behalf of Post Oak Motor Cars and The Post Oak Collection. As the President of both, I am delighted to share our extraordinary journey and the exceptional services we offer to our discerning clientele.

Nestled in the vibrant heart of Houston, Post Oak Motor Cars represents far more than just a dealership; we are a symbol of luxury and a paragon of excellence. Our dealership proudly holds the distinction of being Houston's exclusive authorized Bentley dealership, the sole Bugatti dealership in Texas, and the Gulf Coast's largest authorized Rolls-Royce Motor Cars dealership. We are committed to delivering an unparalleled automotive experience, catering not only to our local patrons but also to athletes and celebrities, providing both sales and service expertise.

Our journey in the realm of luxury automobiles spans over two decades, marked by remarkable growth. In the past five years, we've expanded our brand portfolio to encompass not only Bentley, Bugatti, Karma, Rolls-Royce Motor Cars but have also proudly welcomed Vintage Bronco, Hispano Suiza and Zenvo to our family.



**Tilman J. Fertitta - Owner, Post Oak Motor Cars**

With the support and vision of ownership, the esteemed Fertitta family has been instrumental in setting Post Oak Motor Cars apart, enabling us to offer a truly unique customer experience, complete with concierge hotel services and exclusive amenities. Their commitment to excellence in every aspect of business ensures that we will continue to evolve and elevate your Post Oak Motor Cars experience.

In 2022, we unveiled our latest addition, The Post Oak Collection, in The Woodlands. This collection showcases some of the world's finest automotive brands and offers an extensive selection of pre-owned exotic and luxury cars for sale. From BMW to Bugatti, we are poised to fulfill all your desires and needs. We are excited to announce that in 2024, this same concept will be introduced in the Rice Military/Memorial Park area, extending the same luxury experience our clients receive in Uptown and The Woodlands.

At the heart of our success and growth lies our unwavering commitment to providing an unparalleled client experience, both during and after the purchase of your new vehicle. We consider ourselves first and foremost a lifestyle and experience company that just happens to represent some of the world's most prestigious automotive brands.

For any inquiries, please do not hesitate to contact us at 346-423-3110 or visit [thepostoakcollection.com](http://thepostoakcollection.com) to embark on your journey towards your next luxury vehicle.

We appreciate the trust you have placed in us to fulfill your automotive dreams and look forward to serving you, as we continue to redefine the essence of luxury in the world of automobiles.

Sincerely,

Lonny Soza  
President, Post Oak Motor Cars & The Post Oak Collection

# 2024 WILL BE A YEAR TO REMEMBER



**Diane Caplan—  
Head of Marketing  
Post Oak Motor Cars**

As we begin a new year, I am thrilled to extend my warmest greetings to each one of you, our valued clients and esteemed friends of Post Oak Motor Cars. I am honored to share with you the exciting developments we have in store for 2024 and beyond.

Our unwavering commitment to providing unparalleled luxury and exceptional experiences has driven us to new heights. It's my pleasure to announce that 2024 is poised to be a year filled with unprecedented opportunities and ventures that will undoubtedly leave an indelible mark on your journey with Post Oak Motor Cars.

### **My Supercar World Podcast**

I'm elated to introduce our latest venture, the "My Supercar World" podcast. This new video podcast will celebrate and spotlight the remarkable stories, insights, and experiences into the world of the supercar lifestyle. Delving into the life of the collectors, motorsport legends, influencers, and visionaries who are reshaping the automotive landscape with their passion for living the supercar lifestyle.

### **Post Oak Motor's Road to Monterey Car Week**

For all our clients, we're thrilled to introduce a spectacular new addition to our offerings - a captivating excursion to the famed Monterey Car Week. This renowned event is a paradise for automotive aficionados and collectors alike. It will be an extraordinary opportunity to indulge in the world's finest automobiles and revel in the luxury that's synonymous with the Post Oak Motor Cars experience.



### **LPGA Chevron Sponsorship**

Our association with the LPGA Chevron sponsorship in the Woodlands continues to be a source of immense pride for us. We are honored to be a part of this prestigious event once again in April of 2024, supporting the world's most talented female golfers. This partnership reflects our dedication to excellence, precision, and unwavering commitment to supporting women in sports.



### **Elevating the Client Experience**

At Post Oak Motor Cars, we understand that our clients expect nothing less than perfection. Our unwavering commitment to exceeding your expectations remains steadfast. In 2024, we will continue our relentless pursuit of perfection, ensuring that your experience with us remains peerless. We aim to set new benchmarks for excellence, offering you unparalleled ownership experience and a standard of care that befits the world's most luxurious automotive brands.

As we set sail into 2024, the horizon looks promising, and our passion for all things automotive burns brighter than ever. We are deeply grateful for your unwavering support, and it is your trust and enthusiasm that inspire us to continuously reach for the stars.

Keep Driving,

Diane Caplan  
Head of Marketing, Post Oak Motor Cars

MEET THE POST OAK MOTOR CARS MANAGEMENT & SPECIALIST TEAM



Paige Taylor – Controller



Jeff Pollard – Service & Parts Director



Rick Canales – General Sales Manager



Max Malikov – Bugatti Brand Manager



John Tuttle – Brand Specialist



Scott Moore – Brand Specialist



Mark Meyerson – Sales Manager



Sarah Wilbur – Finance Director



Liz Sian – Head of Client Relations



Diego Rodriguez - Brand Specialist



Issacc Rendon – Brand Specialist



David Sharp– Brand Specialist



Dustin Leighton – Parts Manager



Joshua Bashor -  
Vehicle Merchandising Manager

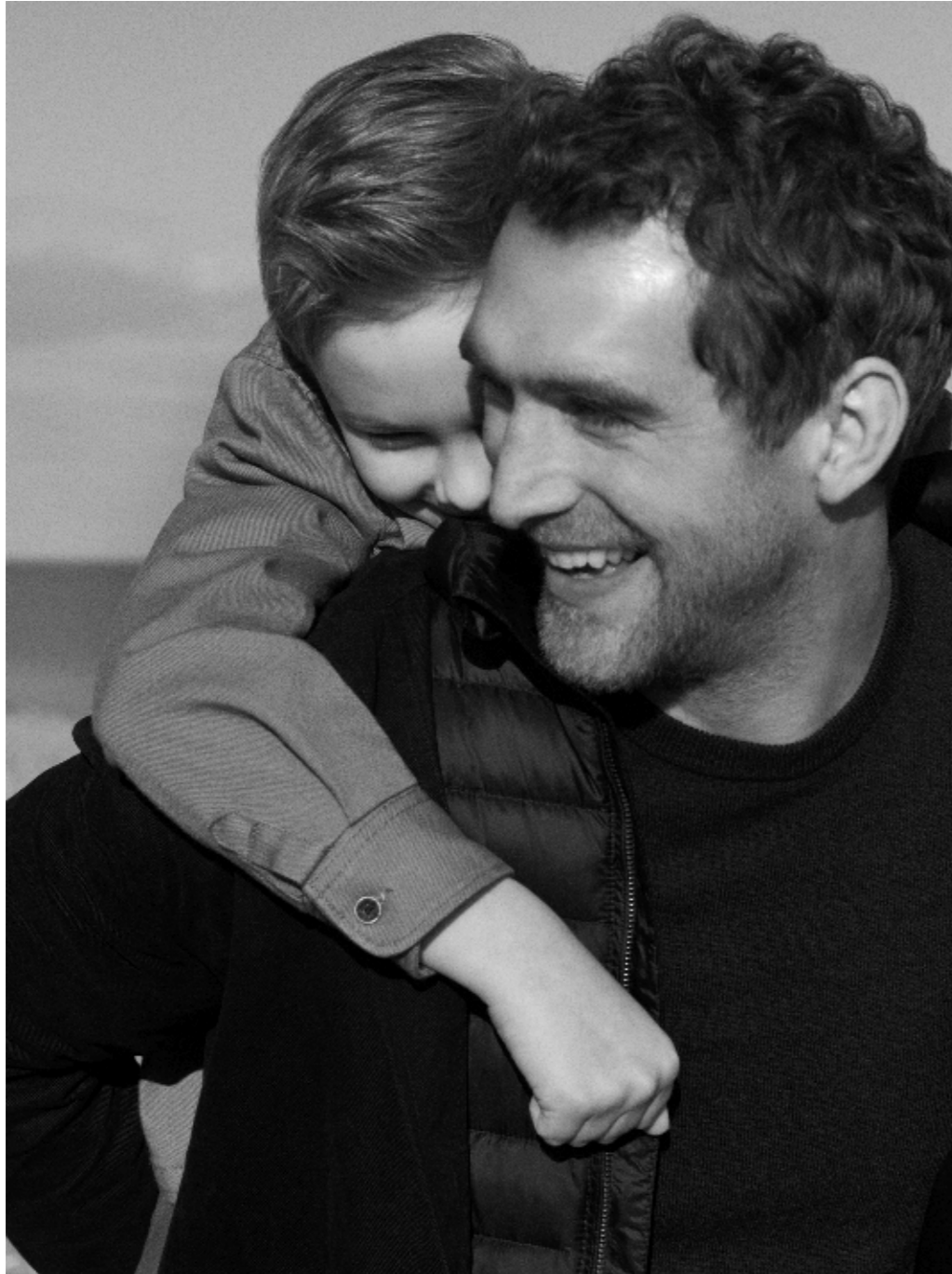


Jared Sheni – Brand Specialist



PATEK PHILIPPE  
GENEVE

BEGIN YOUR OWN TRADITION



YOU NEVER ACTUALLY OWN A PATEK PHILIPPE.  
YOU MERELY TAKE CARE OF IT FOR THE NEXT GENERATION.

CALATRAVA REF. 5226G



de **BOULLE**

Dallas • Houston  
deBoullé.com



# W O O D L A N D S

## CONTENTS

WELCOME.....6

2024 WILL BE A YEAR TO REMEMBER.....8

MEET THE POST OAK MOTOR CAR TEAM.....10

POST OAK MOTOR CARS AT THE WOODLANDS.....18

ROLLS-ROYCE SPECTRE.....24

ROLLS-ROYCE GHOST BLACK BADGE.....46

ROLLS-ROYCE SPECTRE EVENT.....60

POST OAK COLLECTION - CHEVRON CHAMPIONSHIP.....66

GO RED FOR WOMEN LUNCHEON.....72

BUGATTI W16 MISTRAL.....76

MONTEREY CAR WEEK.....92

THE LUXE-GT EDITION GATEWAY BRONCO.....100

POST OAK COLLECTIONS RIDES AND ROCKETS EVENT.....106

POST OAK HOTEL - PENTHOUSE SUITE.....112

BENTLEY BENTAYGA RANGE.....122

BENTAYGA EXTENDED WHEELBASE MULLINER.....134

LOTUS ELETRE.....152

LOTUS EMIRA.....160

KARMA FULL BEV SUPER COUPE.....170

CONTACT US.....174

SINCE 1904

hispanosuizacars.com



mmcmedia

Published by:  
 MMC Media International Ltd, 54 Wood Street, Lytham St. Annes, Lancs, UK FY8 1QG Tel: (+44)1253 319882/3 www.mmcmedia.com  
 Please Contact Steve Streetly or Chris Shorley to discuss your bespoke publishing requirements.  
 Design and Layout by Cas Streetly.

### DISCLAIMER

No part of this publication may be copied or reproduced in any form or by any means, electronic, mechanical, photocopy or otherwise without the express permission of the publishers

# BROOKS BALLARD



# FINEST PROPERTIES



## POLO & REAL ESTATE

ENGEL & VÖLKERS<sup>®</sup>  
PRIVATE OFFICE



ENGEL & VÖLKERS HOUSTON  
309 GRAY STREET SUITE 108 HOUSTON, TX 77002 +1 (713) 522-7474  
HOUSTON.EVREALESTATE.COM

## PINEHAVEN ESTATE

HOUSTON TEXAS

  
BEDROOMS  
5

  
BATHROOMS  
7

  
LIVING AREA  
7,687 sq. ft.

  
PRICE  
\$5,350,000

**POST OAK MOTOR CARS LUXURY  
SHOWROOM IN WATERWAY SQUARE  
DISTRICT, AT THE WOODLANDS.**





# 15 Regent Square

The Woodlands, TX 77381 • \$3,500,000

4 Bedrooms • 4 Full & 1 Half Baths  
5,294 Sqft. (\$661/Sqft.) • 8,949 Lot Sqft • Single-Family

This spectacular contemporary home was taken down to the studs, and completely remodeled, with no expense spared! Located in a gated enclave in Panther Creek, just minutes from Whole Foods & shops in Hughes Landing! The study will inspire you with soft close cabinets & drawers & natural stone accent wall; large format porcelain tile floors lead to your main living area with walls of windows and a gas fireplace. The glass-encased wine room masterpiece & butler's pantry are adjacent to the chef's kitchen.

2 primary bedrooms (1 up, and 1 down) The 1st-floor primary has access to the pool & patio, an unbelievable bath & walk-in closet. Take the elevator or floating staircase with tempered glass upstairs, where you'll find 3 additional bedrooms with gorgeous en-suite baths & walk-in closets. Each light fixture, countertop, and accent wall was selected with such attention to detail, and the design is unparalleled! Spray foam insulation, whole house leak detection, climate-controlled garage with epoxy flooring & more!



Mike Seder  
Owner / Sales Agent  
Hablo español  
seder@mikeseder.com  
Mobile. 713-806-6796  
Office. 281-602-8823



Ally Seder  
REALTOR®  
Luxury Home Specialist  
Hablo español  
ally@mikeseder.com  
Mobile. 713-202-6093  
Office. 281-602-8823

EXCLUSIVELY PRESENTED BY



Post Oak Motor Cars opened a new luxury showroom and sales office at 1501 Lake Robbins in The Woodlands Waterway Square District.

Situated adjacent to The Woodlands Waterway, the new Post Oak Motor Cars showroom, called "The Post Oak Collection," will showcase the company's pre-owned luxury vehicles, which include Rolls-Royce, Bentley, Karma, Bugatti and Lotus models.

Post Oak Motor Cars is Texas' only Bugatti dealer; Houston's only authorized Bentley and Karma franchise; and the Gulf Coast's largest authorized Rolls-Royce dealership.

"With their reputation for exceptional customer service and attention to detail, Post Oak Motor Cars will add a welcome presence

to The Woodlands with a showroom in The Woodlands Waterway Square District for our residents and visitors who appreciate and seek quality luxury vehicles," said Kellie Forman, Senior Vice President, Leasing for The Howard Hughes Corporation.

Situated next to I-45 and minutes away from the Grand Parkway and the Hardy Toll Road, the prestigious Waterway Square District includes the award-winning The Woodlands Waterway and Waterway Square, along with shopping, dining, Class A office space, entertainment and hospitality.

Post Oak Motor Cars' new showroom in The Woodlands will complement their original showroom located in the uptown Galleria area of Houston.



GOODMAN SEATING SYSTEM | RODOLFO DORDONI DESIGN  
TORII BOLD ARMCHAIR AND OTTOMANS | NENDO DESIGN

DISCOVER MORE AT [MINOTTI.COM/GOODMAN](http://MINOTTI.COM/GOODMAN)

**Minotti**

2800 KIRBY DR, A-116  
HOUSTON, TX 77027  
T. (346) 803-2300  
[INFO@CAMSTUDIOID.COM](mailto:INFO@CAMSTUDIOID.COM)  
[WWW.CAMSTUDIOID.COM](http://WWW.CAMSTUDIOID.COM)

  
**CAMSTUDIO**



# SPECTRE

THE ROLLS-ROYCE THAT CHANGES EVERYTHING



ROLLS-ROYCE

MOTOR CARS

HOUSTON



Spectre is the Rolls-Royce that changes everything – the world’s first ultra-luxury electric super coupé, ushering in the marque’s bold new all-electric future. Crucially, it is a Rolls-Royce first and an electric car second: no concessions or compromises in terms of interior space, comfort, performance or ride quality have been made– indeed, all have been refined and augmented by the car’s underpinning architecture and engineering.



Your Dream  
Our Obsession

**AL ROSS** | CUSTOM HOMES

[www.alrosscustomhomes.com](http://www.alrosscustomhomes.com)

713.306.9154



In 1900, motoring pioneer The Hon Charles Stewart Rolls made a bold prediction in a magazine article: “The electric car is perfectly noiseless and clean. There is no smell or vibration. They should become very useful when fixed charging stations can be arranged,” he declared. Those words, written four years before his historic first meeting with Henry Royce, were to prove prophetic; but it was more than a century later that his vision was finally realised by the company they co-founded.

In September 2021, Rolls-Royce Motor Cars confirmed it had begun testing of the first model in its history to be conceived and engineered from the beginning as an electric car. That testing programme extended to more than 2.5 million kilometres in every extreme of terrain and temperature, simulating over 400 years of normal use. A year later, in October 2022, Spectre was unveiled to the world: an audacious promise kept, and a monumental technical undertaking completed.

As the first fully-electric Rolls-Royce ever made, Spectre proves that battery-electric technology has entirely come of age, and can be successfully deployed at the very apex of automotive excellence, luxury and performance. It also represents an epochal technological and intellectual shift for the marque: by the end of 2030, its entire product portfolio will be fully electric; Rolls-Royce will never again produce a new model with an internal combustion engine.





Spectre has created an entirely new class of motor car: the ultra-luxury electric super coupé. The all-electric powertrain takes the signature Rolls-Royce experience – instant torque, silent running and the sense of one imperceptible gear – and enhances it for a new generation of clients. Its ‘Decentralised Intelligence’ system enables free and direct exchange of information between thousands of individual vehicle functions, further elevating the marque’s celebrated ‘magic carpet ride’. And in its contemporary yet timeless aesthetic, it takes the brand’s design language and Bespoke capabilities into a new, electric age.

#### **Spectre philosophy and positioning**

Spectre is the Rolls-Royce that changes everything – the world’s first ultra-luxury electric super coupé, ushering in the marque’s bold new all-electric future. Crucially, it is a Rolls-Royce first and an electric car second: no concessions or compromises in terms of interior space, comfort, performance or ride quality have been made – indeed, all have been refined and augmented by the car’s underpinning architecture and engineering.

A generously proportioned, visually striking two-door fastback, Spectre is the spiritual successor to the fabled Phantom Coupé. Its intimate interior provides a perfect canvas for Bespoke personalisation, complemented by a unique illuminated fascia and the first Starlight Doors ever specified in a production Rolls-Royce.

No two Spectre clients are exactly alike, but they generally share a keen appreciation of fine materials and craftsmanship, and a marked preference for uncluttered, minimalist design free of ostentation and superfluity.

Often younger, self-made and self-confident people, many Spectre clients embrace contemporary ideas around sustainability, authenticity, conscientiousness and longevity. As one of the world’s most desirable luxury goods, Spectre is an extension of the people who commission it, reflecting their individual personalities and values, as well as symbolising their achievements.

#### **ENGINEERING ‘Rolls-Royce 3.0’**

The first Goodwood-era Rolls-Royce, launched in 2003, was Phantom. Underpinned by its own Bespoke architecture, this was Rolls-Royce 1.0. For its successor, the marque created the ‘Architecture of Luxury’ (see below) – an all-aluminium spaceframe that also provides the foundations for Cullinan and Ghost – representing Rolls-Royce 2.0. With its fully-electric powertrain and Decentralised Intelligence, Spectre marks the start of Rolls-Royce 3.0, and a new era for super-luxury motoring.

#### **All-aluminium Architecture of Luxury**

Spectre is the fourth series Rolls-Royce to be built on the Architecture of Luxury platform, which is unique and proprietary to Rolls-Royce Motor Cars. In a farsighted move reminiscent of Charles Rolls’ famous prophecy, it was deliberately conceived from the outset to accommodate an electric powertrain as and when the technology became available.

It comprises an all-aluminium spaceframe that is infinitely scalable and modifiable around four fixed points, one at each corner of the motor car. This inherent flexibility allows Rolls-Royce to adjust the bulkhead, floor, crossmembers and sill panels in a way most appropriate to each individual product.



With Spectre, Rolls-Royce engineers unlocked previously unexplored potential in the concept. The sophisticated extruded aluminium sections and integration of the battery into the structure make Spectre’s spaceframe 30% stiffer than in any previous Rolls-Royce. The architecture also allowed engineers to place the floor halfway between the sill structures rather than above or underneath them.

A channel for wiring and climate control pipework runs between the battery and the floor, with the battery mounted underneath, producing a perfectly smooth underfloor profile. This allows a low seating position, while moving the bulkhead location deepens the dashboard to create a truly cocooning passenger cabin.

This sensation is amplified by Spectre’s dramatically raked windscreen, which also contributes to the car’s exceptional aerodynamics (see below). The battery’s position gives it a highly beneficial secondary function: fully integrated into the motor car’s architecture, it acts as 700kg of additional acoustic insulation.

#### **All-electric drivetrain**

With Spectre, Rolls-Royce committed to an uncompromised electric future by specifying an all-electric drivetrain rather than a hybrid solution.



It is fitted with two Separately Excited Synchronous Motors (SSMs). The front electric motor produces 190kW / 365 Nm, with the rear motor delivering 360kW / 710 Nm. In performance terms, this equates to an internal combustion engine of 430kW (584 hp) with 900Nm of torque. In terms of acceleration, Spectre achieves 0-60mph in 4.4 seconds (0-100km/h in 4.5 seconds). In establishing an appropriate range for Spectre, the marque first engaged with clients, to understand their requirements. The confirmed range of 530km (329 miles) WLTP goes beyond these requirements, confirming that Spectre fits perfectly into the lifestyle of Rolls-Royce clients, who have an average of more than seven cars in their garage to choose from for any occasion, and who drive an average of 5,100km in their current Rolls-Royce per year.



GSTAAD PALACE  
SWITZERLAND

IT'S NOT A FAIRY TALE.  
IT'S REAL.

*Winter Season:*

*15<sup>th</sup> December 2023 - 8<sup>th</sup> March 2024*



INFO@PALACE.CH



PALACE.CH



Charge time from 10-80% is 34 minutes using a 195 kW (DC) fast charger: this will also produce sufficient charge for 100km in around nine minutes. Spectre is equipped with Active Lane Centring and Adaptive Cruise Control simultaneously.

#### **Battery**

Spectre has a 102kWh lithium-ion battery, made using cobalt and lithium from strictly controlled sources in Australia, Morocco and Argentina: the battery cells are produced using 100% green electricity. It has been extensively tested in temperatures ranging from -40°C to +50°C: Spectre's on-board thermal management system maintains an optimum operating temperature at all times.

#### **Braking Recuperation**

Spectre has a braking recuperation function that the driver can configure by pushing a button marked 'B' on the Column Shifter. By activating 'Brake Mode', braking recuperation is increased, enabling so-called single-pedal driving and even allowing the car to come to a complete stop if desired. The default setting on starting is low recuperation, mimicking the automatic driving style of an internal combustion engine Rolls-Royce.

#### **Digital Engineering**

Spectre is the most connected Rolls-Royce in history, with three times as many sender-receiver signals as any previous model. Indeed, engineers describe it as 'Rolls-Royce in ultra-high definition' on account of the speed and accuracy of its responses to road and weather conditions. Each of the car's thousands of drivetrain and chassis characteristics were exhaustively tested and refined during its 2.5-million-kilometre testing programme.

Through a software architecture known as Decentralised Intelligence, data is processed closer to its source rather than being handled in its entirety by a single central processing unit. To achieve this, each of the 141,200 sender-receiver variables has its own dedicated handmade control; in nearly all cases, several additional sub-variables account for variations in climate, ground speed, road type, vehicle status and driving style. This enables the car to respond more quickly to driver inputs and changing road conditions.

#### **Planar Suspension System**

Spectre's suspension is an evolution of the Planar System originally launched on Ghost. Engineers describe it as 'an orchestra of



systems', which combines specially developed hardware and Spectre's high-speed processing capabilities to deliver the marque's hallmark 'magic carpet ride'.

Spectre's 30% greater torsional rigidity negates the need for the upper wishbone damper used in Ghost. On straight roads, the system can automatically decouple Spectre's anti-roll bars, allowing each wheel to act independently. This prevents the rocking motion that occurs when one side of a vehicle hits an undulation in the road, and dramatically reduces high-frequency disturbances caused by smaller, repeated surface defects.

When the system detects a corner, it recouples the components and stiffens the damper, and prepares to activate the four-wheel steering system to ensure effortless entry and exit. During cornering, individual sensors monitor almost 20 different steering, braking, power delivery and suspension parameters, and adjust them automatically to maintain perfect tracking and stability.

#### **SPIRIT – Digital Architecture of Luxury**

SPIRIT is a completely redesigned digital architecture that connects the Spectre owner with their car more closely than ever before. As well as managing the motor car's functions, SPIRIT is seamlessly integrated into the marque's Whispers app, allowing owners to interact with their car remotely.

For the first time, clients are able to extend their Bespoke commission into the digital realm; for example, by selecting the colour of the instrument dials to complement the car's interior palette or exterior finish.

#### **Effortless Doors**

At almost 1.5 metres in length, Spectre's laser-welded pillarless coach doors are the largest ever fitted to a Rolls-Royce. Made from 100% aluminium to reduce weight without compromising rigidity and strength, they are equipped with a specially developed iteration of the Effortless Doors power-assisted system specified on every Rolls-Royce from Phantom onwards.



As originally developed for the current Ghost model, Spectre's Effortless Doors operate on opening as well as closing. A single pull of the interior handle opens the door to 'comfort position', allowing the occupant to check for hazards or obstructions. They then pull and hold the handle to activate full power assistance. When the door has opened sufficiently, they simply release the handle, which engages the door brake.

The door can be closed automatically by pushing of a button on the external handle, or manually with power assistance. On-board longitudinal and transverse sensors, as well as G-force sensors fitted to each door, allow the same speed of operation regardless of hill or driveway angles.

In a feature unique to Spectre, the driver's door closes automatically when the driver presses the brake pedal.

**EXTERIOR**

Spectre's design draws inspiration from worlds far beyond automotive, including haute couture, modernist sculpture, nautical design, tailoring and contemporary art. In particular, the design takes cues from the clarity and precision of line and intelligent use of reflection in modern racing yacht styling.

Spectre's Pantheon grille is the widest ever fitted to a Rolls-Royce. The polished stainless-steel vanes are smooth and flush-fitting, and softly illuminated with 22 LEDs lighting up the sandblasted rear surface, creating a subtle three-dimensional signature at night.

The Spirit of Ecstasy figurine was specially created for Spectre. With a lower stance and more aerodynamic profile, perfected over 830 hours of design modelling

and wind-tunnel testing, it contributes to the motor car's drag coefficient of just 0.25cd, making Spectre the most aerodynamic Rolls-Royce ever built.

The split headlights have been a signature Rolls-Royce feature for many years, and are a direct visual reference to Spectre's illustrious forebear, Phantom Coupé.

The sharp, vertical bow line draws the eye rearward to Spectre's fastback, which is inspired by both classic motor cars and racing yachts. The seamless roofline contributes significantly to Spectre's exceptional aerodynamics.

The lower 'waft line' is the visual representation of the fabled Rolls-Royce 'magic carpet ride'; Spectre's coachwork gently tucks into the sill, lightening the surfacing and creating a sense of motion by reflecting the road passing beneath it, much like the hull of a racing yacht reflects the water as it cuts through it.

Following the roofline back, the tail lamps are set into the largest single body panel ever produced for a Rolls-Royce, which extends from the A-pillar to the luggage compartment. In anticipation of a variety of Bespoke exterior colour commissions, the rear lamps are colourless for neutrality.

To match Spectre's generous proportions, it is the first production Rolls-Royce two-door coupé to be equipped with 23-inch wheels in almost 100 years.

**INTERIOR**

Spectre's interior contains a wealth of technologically advanced Bespoke features. For the first time on a series production Rolls-Royce, these include Starlight Doors, which incorporate



4,796 softly illuminated 'stars'. If they wish, customers can alternatively choose a backdrop of Canadel panelling, hand-crafted from a range of exquisite wood. The ethereal, celestial theme continues with Spectre's Illuminated Fascia. Developed over the course of two years and more than 10,000 collective hours, it incorporates the Spectre nameplate surrounded by a cluster of over 5,500

stars. Located on the passenger side of the dashboard, the illuminations are completely invisible when the motor car is not in operation. Inspired by British tailoring, the all-new front seat design has lapel sections that can be rendered in contrasting or matching colours to the main base. As with all Rolls-Royce motor cars, Spectre's interior suite offers clients near-infinite Bespoke possibilities.



#### THE ROLLS-ROYCE THAT CHANGES EVERYTHING

Spectre is perfectly in tune with contemporary sensibilities, while also setting the direction for the future of the marque. As Charles Rolls himself foresaw, it is the motor car Rolls-Royce has been driving towards since it was founded – an elevated expression of effortlessness, power and historical endurance. A Rolls-Royce first and an electric car second, Spectre has been boldly conceived, meticulously engineered, exhaustively tested and spectacularly realised, and represents an unequivocal statement of intent, signalling to the world what Rolls-Royce stands for now and in the decades to come.



TANGLEWOOD | \$6.2+M  
110MAPLEVALLEY.COM



MEMORIAL CLOSE IN | \$3.1+M  
SOLD



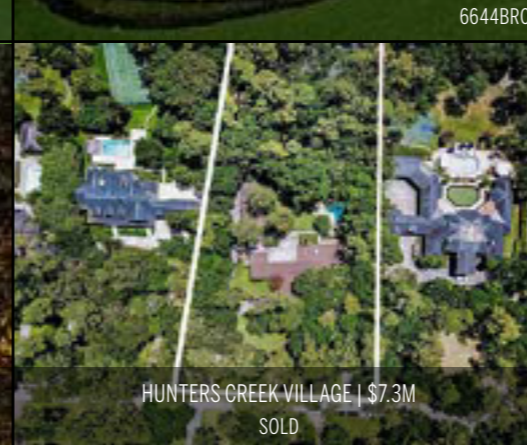
MEMORIAL PARK | \$3.5+M  
SOLD



WEST UNIVERSITY | \$3.5+M  
6644BROMPTON.COM



PINEY POINT VILLAGE | \$6.7+M  
40STILLFOREST.COM



HUNTERS CREEK VILLAGE | \$7.3M  
SOLD



RIVER OAKS TALL TIMBERS | \$4.9M  
SOLD



INWOOD MANOR | \$425,000  
INWOODMANOR3B.COM



BELLAIRE | \$1.5+M  
SOLD



GALVESTON | \$3.8+M  
SOLD



RIVER OAKS | PRICE UPON REQUEST  
UNDER CONTRACT | 3643KNOLLWOOD.COM



RIVER OAKS | \$6.1+M  
3623OVERBROOK.COM



BUNKER HILL ESTATES | \$2.9+M  
SOLD

## EXPERIENCE

Serving Houston's finest neighborhoods for over 43 years. Call Walter to make your next move.

Contact me today for more information.

**WALTER BERING**

#1 TOP PRODUCER

713.851.9753 | walter.bering@sir.com

WALTERBERING.COM

  @WALTERBERINGSOTHEBYS



# GHOST

THE PUREST BLACK BADGE YET

ROLLS-ROYCE  
MOTOR CARS



“Today, we announce a product that represents a new kind of Black Badge motor car, one that seizes on the minimalist, Post Opulent design treatment that has recast the legend of Ghost but amplifies and subverts it with the application of black. Our most advanced motor car yet has been reengineered to characterise the alter ego of Rolls-Royce: assertive, dynamic and potent. This is the purest Black Badge motor car in the marque’s history. This is Black Badge Ghost.”

Torsten Müller-Ötvös, Chief Executive Officer, Rolls-Royce Motor Cars

After considerable internal debate, Rolls-Royce announced that it would create an officially sanctioned response to a new kind of client: a permanent Bespoke treatment to its motor cars named Black Badge. These products, which were launched in 2016, would be darker in aesthetic, more urgent in personality and dramatic in material treatment. In the five years since Black Badge became publicly available, this bold family of motor cars has come to symbolise the pinnacle of a new type of super-luxury product, setting in motion a shift across the wider luxury industry. Subsequently, nearly all luxury makers create products that seek to capture the Black Badge spirit. Rolls-Royce Motor Cars has a unique fluency in its clients.

Its close relationship with the women and men who patronise the marque affords the company’s decision-makers an unparalleled understanding of the super-luxury consumer: their aesthetic preferences, uncompromising lifestyle requirements and changing taste patterns. Only with this understanding, and briefings supplied by the brand’s Luxury Intelligence Unit, is the marque able to create an accurate product response. Black Badge is a vivid example of this. Rolls-Royce Motor Cars has always attracted subversive clients – rebellious women and men who built their success by breaking rules, taking risks and challenging conventions. In the 2020s, these women and men engage with luxury products on their own terms.

They reject suits for streetwear, use blockchain not banks and influence the analogue world through their digital endeavours. In doing so, they have created new codes of luxury that resonate with their sensibilities: darker in aesthetic, assertive in character and bold in design. Their approach to Rolls-Royce products is no different. The marque has responded accordingly, developing new colour palettes, more technical surface treatments and even more powerful driving experiences without ever compromising the effortless sensibilities that have drawn this bold group of clients to the Rolls-Royce brand.

Black Badge, the highly successful alter ego of Rolls-Royce, now represents more than 27% of commissions worldwide and is codified by the mathematical symbol that represents a potential infinity, which is found within the motor car's interior.

This graphic, also known as the Lemniscate, was applied to Sir Malcolm Campbell's record-breaking Rolls-Royce-powered Blue Bird K3 hydroplane and the marque's designers nominated this hallmark for Black Badge motor cars to reflect their own unrelenting pursuit of power. Rolls-Royce debuted Black Badge with Wraith and Ghost in 2016, followed by Dawn in 2017 then Cullinan in 2019. Today, a new, Post Opulent expression of Black Badge joins the family. The purest and most technologically advanced Black Badge motor car yet, Black Badge Ghost.



# River Oaks Neighborhood



3315 Del Monte Drive

5+ Bed 7+ Bath 12,519 SF 22,500 SF LOT \$12,300,000

New Construction by Layne Kelly Homes



**RB**

**Robert Bland**  
Broker Associate

rbland@compass.com  
713.252.6588

**COMPASS**

compass.com

Compass is a licensed real estate broker and abides by Equal Housing Opportunity laws. All material presented herein is intended for informational purposes only. Information is compiled from sources deemed reliable but is subject to errors, omissions, changes in price, condition, sale, or withdrawal without notice. This is not intended to solicit property already listed. Photos may be virtually staged or digitally enhanced and may not reflect actual property conditions.



## THE DARK SIDE OF POST OPULENCE

Conceived in response to a group of clients who requested a Rolls-Royce that was agile, discreet, highly connected and free of any superfluous design, the new Ghost is not just the most technologically advanced Rolls-Royce yet, but also the most aesthetically pure. In the twelve months since this motor car has been available, it has become one of the fastest-selling products in the marque's history, representing more than 3,500 commissions worldwide.

This motor car also started a new design conversation in its relentless pursuit of minimalism and purity. Named 'Post Opulence' by Rolls-Royce designers, this aesthetic movement is characterised by reduction and substance. In service to this, exceptional materials are selected and celebrated while overt design is limited, intelligent and unobtrusive.

However, within this group of clients – who celebrate minimalism and material substance – a rebellious subset sought to create a disruptive expression of Ghost by permanently cloaking it in a shade so pure that its very classification as a colour remains a subject of debate: black. Black Badge Ghost reflects these clients' desires. It is the dark side of Post Opulence: minimalism in extremis.





## EXTERIOR

Clients are free to select any of the marque's 44,000 'ready-to-wear' colours or create their own entirely unique Bespoke hue. However, the overwhelming majority of women and men who requested this darker expression of Ghost have selected the signature Black. To create what is the motor car industry's darkest black, 100lbs (45kg) of paint is atomised and applied to an electrostatically charged body in white before being oven dried. The motor car then receives two layers of clear coat before being hand-polished by a team of four craftsmen to produce the marque's signature high-gloss piano finish.

At between three and five hours in duration, this operation is entirely unknown in mass production, creating an intensity simply unattainable elsewhere in the automotive industry. It is this depth of darkness that serves as the perfect canvas for clients to add a high-contrast, hand-painted Coachline, which has done much to create the Black Badge 'black and neon' aesthetic that has come to characterise this vivid family of Rolls-Royce motor cars.

To match this dramatic coachwork, the marque's Bespoke Collective of designers, engineers and craftspeople collaborated to create an entirely customisable process that allows Rolls-Royce hallmarks such as the high-polished Spirit of Ecstasy and Pantheon Grille to be subverted. Instead of simply painting these components, a specific chrome electrolyte is introduced to the traditional chrome plating process that is co-deposited on the stainless-steel substrate, darkening the finish. Its final thickness is just one micrometre – around one hundredth of the width of a human hair. Each of these components is precision-polished by hand to achieve a mirror-black chrome finish before it is fitted to the motor car.

The exterior treatment resolves with a Bespoke 21-inch composite wheelset. Designed in the Black Badge house style and reserved for Black Badge Ghost, the barrel of each wheel is made up of 22 layers of carbon fibre laid on three axes, then folded back on themselves at the outer edges of the rim, forming a total of 44 layers of carbon fibre for greater strength. A 3D-forged aluminium hub is bonded to the rim using aerospace-grade titanium fasteners and finished with

the marque's hallmark Floating Hubcap, ensuring the Double R monogram remains upright at all times. To celebrate the material substance and remarkable surface effect, a lightly tinted lacquer is applied to protect the finish but still allow clients to observe the technical complexity of the wheels' unique carbon fibre construction.

## INTERIOR

Advanced luxury materials have been meticulously created and crafted for a unique ambience in the interior suite. While recalling the dramatic mechanical intent of Black Badge Ghost, the materials are true to Ghost's Post Opulent design philosophy – one defined by authenticity and material substance rather than overt statement. In this spirit, a complex but subtle weave that incorporates a deep diamond pattern rendered in carbon and metallic fibres has been created by the marque's craftspeople.

Multiple wood layers are pressed onto the interior component substrates, using black Bolivar veneer for the uppermost base layer. This forms a dark foundation for the Technical Fibre layers that follow. Leaves woven from resin-coated carbon and contrasting metal-coated thread laid in a diamond pattern are applied by hand to the components in perfect alignment, creating a three-dimensional effect. To secure this extraordinary veneer, each component is cured for one hour under pressure at 100°C. This is then sand-blasted to create a keyed surface for six layers of lacquer, which is hand-sanded and polished before being incorporated into the motor car.

If specified in the client's commission, the Technical Fibre 'Waterfall' section of the individual rear seats receives the Black Badge family motif: the mathematical symbol that represents potential infinity known as a Lemniscate. Rendered in aerospace-grade aluminium on the lid of Black Badge Ghost's Champagne cooler, it is applied between the third and fourth layer of a total of six layers of subtly tinted lacquer, creating the illusion that the symbol is floating above the Technical Fibre veneer.

Aesthetes from the marque's design team elected to further enhance the noir ambience of Black Badge Ghost by subduing the brightwork.



Air vent surrounds on the dashboard and in the rear cabin are darkened using physical vapour deposition, one of the few methods of colouring metal that ensures parts will not discolour or tarnish over time or through repeated use.

across the fascia, echoing the subtle sparkle of the Shooting Star Starlight Headliner.

## ENGINEERING

The Post Opulent principles of simplicity have also been applied to dramatic effect in the Black Badge Ghost timepiece design: only the tips of the hands and the twelve, three, six and nine o'clock markers are picked out, in a subdued chrome finish, creating a remarkably minimal clock. Additional timepieces are available within Black Badge Ghost to suit the client's aesthetic preference.

Black Badge is not just an aesthetic – it is an experience. The clients who requested this motor car demanded that the Bespoke treatment of Black Badge Ghost extend from the design atelier into the marque's engineering department. In doing so, the Bespoke Collective of designers, engineers and craftspeople collaborated to create a vivid driving personality that matched Black Badge Ghost's visual intent without compromising the marque's effortless ride proclivities and exhaustive acoustic tuning.

The timepiece is flanked by a world-first Bespoke innovation that debuted with Ghost: the Illuminated Fascia, which displays an ethereal glowing Lemniscate, surrounded by more than 850 stars. Located on the passenger side of the dashboard, the constellation and motif are completely invisible when the interior lights are not in operation. As in Ghost, the Lemniscate motif is illuminated via 152 LEDs mounted above and beneath the fascia, each meticulously colour-matched to the cabin's clock and instrument dial lighting. To ensure the Lemniscate is lit evenly, a 2mm-thick light guide is used, featuring more than 90,000 laser-etched dots across the surface. This not only disperses the light evenly but creates a twinkling effect as the eye moves

Key to its potent character is the Architecture of Luxury, Rolls-Royce's proprietary all-aluminium spaceframe architecture that debuted with Phantom. This sub-structure not only delivers extraordinary body stiffness, but its flexibility and scalability allowed Ghost to be equipped with all-wheel drive, four-wheel steering and the award-winning Planar Suspension system. For Black Badge, these peerless engineering qualities have been comprehensively re-engineered, including the fitting of more voluminous air springs to alleviate body roll under more assertive cornering. The capacity of the Rolls-Royce twin-turbocharged 6.75-litre V12 engine was deemed sufficient.

By Appointment Only • T: 281.477.7859 • E: info@1800winerrooms.com  
11350 Jones Road West Suite B200 • Houston, TX 77065



However, the flexibility of this celebrated power plant has been exploited to generate an extra 29PS, creating a total output of 600PS. The sense of a single infinite gear has also been dramatised with the addition of a further 50NM of torque, for a total of 900NM. The powertrain has also received Bespoke transmission and throttle treatments to further enhance the engine's increased power reserves. The ZF eight-speed gear box and both front- and rear-steered axles work collaboratively to adjust the levels of feedback to the driver, depending on throttle and steering inputs.

As with all products in the marque's Black Badge portfolio, the 'Low' button situated on the gear selection stalk unlocks Black Badge Ghost's full suite of technologies. This is asserted by the amplification of the motor car's engine through an entirely new exhaust system, subtly announcing its potency.

All 900NM of torque is available from just 1700rpm and, once underway in Low Mode, gearshift speeds are increased by 50% when the throttle is depressed to 90%, delivering Black Badge Ghost's abundant power reserves with dramatic immediacy.

To bolster confidence when exploiting Black Badge Ghost, the braking bite point has been raised and pedal travel decreased. Non-Black Badge Ghost is provisioned with a robust braking hardware package that was deemed more than ample under extreme conditions, even accounting for the Black Badge alter ego's increased power output.

However, a new suite of bold high-temperature brake calliper paint colours has been developed in preparation for forthcoming Black Badge Ghost commissions. Black Badge Ghost is available to commission now.



# UNVEILING ELEGANCE:

THE NEW ULTRA-LUXURY SUPER COUPE  
- ROLLS-ROYCE SPECTRE AT  
ROLLS-ROYCE MOTOR CARS HOUSTON





Post Oak Motor Cars is no stranger to luxury and opulence, but when it comes to the pinnacle of automotive excellence, one brand stands above the rest—Rolls-Royce. Synonymous with unrivaled craftsmanship, breathtaking design, and the epitome of luxury, Rolls-Royce has set the bar higher with the all-new fully electric Rolls-Royce Spectre. Recently, clients of Rolls-Royce Motor Cars Houston were captivated by the highly anticipated launch party of the latest masterpiece.

The exclusive launch party held by Rolls-Royce Motor Cars Houston was an invitation-only event that brought together clients of Post Oak Motor Cars, both current Rolls-Royce owners and those that have already placed their deposit for their very own Spectre.

As the anticipation reached its peak, Head of Marketing of Post Oak Motor Cars, Diane Caplan, stepped up to the microphone to welcome the crowd and introduce the two men of the hour, President of Post Oak Motor Cars, Lonny Soza and President & CEO of Rolls-Royce Motor Cars North America, Martin Fritsches.

As Martin Fritsches spoke to the Spectre's triumphant arrival, the moment arrived to unveil the new Rolls-Royce masterpiece. The veil was removed, and there it stood — an awe-inspiring creation that seamlessly blends classic Rolls-Royce design cues with cutting-edge technology and proof that electrification is the ideal match for Rolls-Royce.



  
**CHRISTIAN ANGLE**  
REAL ESTATE



### 1610 N. Ocean Boulevard, Palm Beach, Florida

Stunning Lakefront 6BR/7.2BA home built in 2018. Gorgeous blue wide water views from all primary rooms. Highlights include library, gourmet chef's kitchen, elevator, home gym, full staff kitchen, and 4 car garage. Owner's suite with sweeping water views, large sitting room, morning bar, dual baths and walk-in closets, and balcony with fireplace. First floor VIP Suite features walk-in closet, large bath, and patio. Gorgeous tropical landscaping. Pool, spa, and loggia with fireplace. Dock with boat lift and seating area.

**Exclusive Offering | Contact Christian Angle for Details 561-629-3015**

[www.AngleRealEstate.com](http://www.AngleRealEstate.com)

Though information is assumed to be correct, offerings are subject to verification, errors, omissions, prior sale, and withdrawal without notice. All material herein is intended for informational purposes only and has been compiled from sources deemed reliable. Equal Housing Opportunity.

## Christian J. Angle

C 561.629.3015

T 561.659.6551

[cjangle@anglerealestate.com](mailto:cjangle@anglerealestate.com)

179 Bradley Place, Palm Beach, Florida 33480



THE POST OAK COLLECTION  
AND THE LPGA TEAM UP FOR  
THE CHEVRON CHAMPIONSHIP





The recent Chevron Championship at the luxurious Carlton Woods country club was graced by the collaboration of The Post Oak Collection, Bentley & Rolls-Royce Motor Cars Houston, and the LPGA, which resulted in a spectacular kickoff for the lady's tournament.

The event drew in more than 150 prominent figures from The Woodlands & Houston area, who were treated to an enchanting evening with Rolls-Royce Motor Cars. Among the esteemed guests were Blake Fertitta, Lonny Soza and the President and CEO of Rolls-Royce Motor Cars America, Martin Fritsches, and other high-ranking executives from the LPGA. The ambiance was brimming with elegance and sophistication as everyone mixed and mingled, indulging in lively conversations, and forging valuable connections.

Bentley and Rolls-Royce Motor Cars Houston took center stage as the official transportation partners for the tournament. They provided impressive demo cars for the players, ensuring their commutes during the week-long stay near Carlton Woods were nothing short of luxurious and stylish.

Adding to the excitement of the championship, Bentley Houston proudly assumed the role of the hole-in-one sponsor. This exciting offering presented players with a chance to win a brand new Bentley Continental GT V8 coupe, creating an extra layer of thrill and allure to the already captivating tournament.

The collaboration between The Post Oak Collection, Bentley & Rolls-Royce Motor Cars Houston, and the LPGA proved to be a remarkable success, blending the worlds of luxury automobiles and professional golf seamlessly.

The enchanting evening and exclusive sponsorship added an unparalleled touch of grandeur to the Chevron Championship, making it a memorable and cherished event for all who attended.



If you take pride in your appearance  
If you want your clothing to communicate who and what you are  
If you take pleasure in all that is best in life

*“Make the definitive style statement”*



From business suits and formal attire to casual and sporting wear, we will put together outfits to suit your personality, body shape, and lifestyle.

Whether your interest is to achieve a better fit, have much more choice and individual touches, or merely the convenience of our visiting clothiers, we are happy to serve you.

Harris & Howard Bespoke  
tel: 713 472 9415  
showroom@harrisandhoward.com  
www.harrisandhoward.com



## MONTGOMERY COUNTY GO RED FOR WOMEN LUNCHEON AND FIRST RESPONDER FASHION SHOW: EMPOWERING HEARTS, CHANGING LIVES

On a captivating Friday, May 19, 2023, the Montgomery County Go Red For Women Luncheon and First Responder Fashion Show, in support of the American Heart Association, graced The Woodlands Waterway Marriott & Convention Center. The event was a beacon of hope, igniting a powerful movement to combat cardiovascular disease and promote heart health among women. An unforgettable after party, hosted at The Post Oak Collection, provided the perfect ending to this remarkable occasion.

### Empowering Hearts, Changing Lives:

Since its inception in 2004, the Go Red for Women movement has been on a relentless mission to raise awareness about the leading cause of death in women: cardiovascular disease. The local communities have witnessed the transformative impact of the Go Red for Women experience, which focuses on preventing heart disease and stroke, shares inspiring stories of those affected by this health issue, and mobilizes essential funds to fuel research and education initiatives.





**WRIGHT**  
**PAWN & JEWELRY**  
*Buy ours, sell yours, or get a loan!*  
[www.wrightpawn.com](http://www.wrightpawn.com) @wrightpawnjewelry



**The American Heart Association's Innovation:**

The American Heart Association (AHA) remains at the forefront of innovation, ensuring that every woman is well-informed about her risk of heart disease and empowered to take charge of her well-being. With unyielding dedication, the AHA continues to pave the way for healthier hearts and healthier lives.

**Dedicated Co-Chairs:**

The 2022-2023 Montgomery County Go Red for Women Luncheon was graced by two visionary Co-Chairs, Lonny Soza, President at Post Oak Motor Cars, and Elvira Graham. Their passion and commitment to the cause were unwavering, making the event a resounding success. Supported by CVS Health and the Post Oak Collection, the Luncheon celebrated the strides of the Go Red for Women movement while rallying behind Lonny and Elvira's mission to improve women's heart health and create a world where healthier lives become a reality for all.



**BUGATTI W16 MISTRAL:  
THE ULTIMATE ROADSTER**





Award-winning luxury remodeler since 1995. Let us create and maintain the home your lifestyle deserves with our team of project managers and our Estate & Home Maintenance Services.



713-781-0169 | LBJCONSTRUCTION.COM

Ever since the Veyron was introduced in 2005, the W16 engine has been the beating heart of every Bugatti. The roadgoing car that brings the W16 era to an end was always destined to be special: exclusive, elegant and powerful. It must be the very best of its kind. This is W16 Mistral: the ultimate roadster.

Mate Rimac, Bugatti Rimac CEO, said: "For the final roadgoing appearance of Bugatti's legendary W16 engine, we knew we had to create a roadster. Well over 40% of all Bugatti vehicles ever created have been open-top in design, establishing a long lineage of performance icons that – to this day – are revered the world over. In the Chiron<sup>1</sup> era there had, to-date, been no roadster, so the introduction of W16 Mistral<sup>2</sup> continues this legacy, driven by enormous demand from our clients for an all-new way to experience the mighty performance of our iconic engine. The W16 Mistral opens the next chapter in the Bugatti roadster story, inspired by over a century of open top legends."

For a car as evocative and important as this, great consideration went into the badge it should wear. Far more than simply a development of the Chiron, the roadster needed a name associated with freedom, elegance and speed. Inspiration came from the mistral, a powerful wind that blows from the Rhône River valley, through the chic towns of the Côte d'Azur in southern France and into the Mediterranean. And with the engine so central to this roadster's character, it stands side-by-side with this mighty wind: W16 Mistral.

Built around the definitive 1,600 PS incarnation of the W16 engine, first used in the Chiron Super Sport 300+<sup>3</sup>, the W16 Mistral offers performance unlike any open top car that has gone before. In its design and engineering it is completely bespoke; the existing monocoque is not simply cut off above the A-pillars to make way for the new open-top design but has been reengineered and reshaped to create a more rounded silhouette without compromising performance.

Achim Anscheidt, Bugatti Design Director, said: "We know the W16 Mistral will always have significance in the story of Bugatti, marking the last time that perhaps the greatest ever automotive powertrain is used in a roadgoing production car. We, as a design team, felt enormous pressure to deliver styling that immediately conveyed this landmark moment, drawing inspiration from some of the most beautiful roadsters in Bugatti history."

Their muse would be the 1934 Bugatti Type 57 Roadster Grand Raid, a sporting roadster that represents the pinnacle of elegant design. Marked out by its dual aerodynamic headrests, flowing backwards into the bodywork, and a cut down V-shaped windscreen, this particular Grand Raid – on display at the Louwman Museum in Den Haag – is effortlessly sophisticated with an understated sportiness. Finished in a duo-tone black and yellow livery, it would provide the perfect inspiration for this watershed moment in the Bugatti story.



The W16 Mistral debuts in colors inspired by the Bugatti Type 57 Roadster Grand Raid; a warm black with hints of truffle brown and subtle yellow accents throughout. Not only is it an homage to the iconic coachbuilt body, but also to Ettore Bugatti, who chose the black and yellow combination for many of his personal cars, including his Type 41 Royale. To enthusiasts of the brand, it is a timeless visual pairing.

The W16 Mistral captures the essence of the Grand Raid's V-shaped windscreen and evolves it into a modern-day work of art. A curving windscreen that seemingly wraps around the A-pillars, blending seamlessly into the side windows and creating a 'visor' effect that hints at the motorsport levels of performance W16 Mistral offers. The windscreen itself is a marvel of engineering, curved just enough to create the rounded visor design, without distorting the driver's vision.

The top line of the windscreen and side windows flows purposefully around the side air intakes. This character line then flows back underneath the side glass to shoot through all the way to the front horseshoe grill creating a new three-dimensional character for the famous Bugatti C-line introduced on Chiron. To keep the body side section slim, but also allow for optimum airflow to the W16, the oil cooler intakes on the side were deliberately separated from the engine air intakes, which now sit on the roof, just behind the occupants. The two-new roof-mounted engine air scoops are a nod to the Type 57 Roadster Grand Raid, as well as the first open top Bugatti of the modern era: the Veyron 16.4 Grand Sport. Tighter, more powerful and appearing to leap forwards, W16 Mistral exhibits an entirely different character.

Anscheidt continues: "To reflect the W16 Mistral's new character, we also totally reinvented its frontal appearance, in line with the vertical layout of our unique or few-off models like Divo<sup>4</sup> and La Voiture Noire<sup>5</sup>. It's immediately imbued with a sense of exclusivity; the vertically stacked headlights are completely bespoke and the famous horseshoe grille is reimagined to be much more three-dimensional; both deeper and wider. At the rear, we challenged ourselves to create a striking but also more elegant iteration of Bolide's<sup>6</sup> X-theme taillight motif, which forever left its mark on the world of automotive design."

To design a car like the W16 Mistral requires careful practice of Bugatti's 'Form Follows Performance' design mantra, with each component penned not just to set new standards for beauty, but to also play a role in achieving completely new levels of performance.

Frank Heyl, Bugatti Deputy Design Director, said: "The headlights themselves are intricately shaped, incorporating a four-light signature that subtly nods to the W16 Mistral's four-wheel-drive and four turbochargers. But their three-dimensional surface also functions as an aerodynamic aid that funnels air through the light and out through the wheel arch to improve aerodynamic drag. The wider horseshoe grille allows the high temperature engine radiator to be fully fed purely from one intake, leaving the two side intakes to focus only on providing air to the intercoolers.



# JOURNEY GALAPAGOS

A DESTINATION. AN ADVENTURE. AN EXPERIENCE OF A LIFETIME.

Few places in the world have remained as unspoiled as the Galapagos Islands, and we'll spoil you wildly while you visit them. With nearly two decades exploring the region, we know the best places to see and give you the best ways to see them. With our all-inclusive activities, adventure is yours for the taking, and our shore excursions bring every island to life as only we can.

The Galapagos Islands should be on every world traveler's bucket list, and there's no better time to put it on your Book It List.



Book your Galapagos adventure with Balboa Travel today!  
Balboa Vacations: 800-359-8576 | [Vacations@balboa.com](mailto:Vacations@balboa.com)



©2023 Celebrity Cruises Inc. Ships' registry: Malta and Ecuador. CST 2013711



"The X-tailight, meanwhile, serves the function of venting the side oil coolers through ducts connecting the triangular negative space in between the X beams to the side radiators. Therefore, a pressure drop is created between the side intakes and the outlets at the back of the W16 Mistral which helps to manage the mid-temperature cooling circuit of the mighty W16 most effectively."

But the functional design highlights don't end there. The new ram induction air scoops behind the headrests were developed from the very beginning with stringent rollover tests in mind, so each is made from a bespoke carbon fiber structure that can support the whole weight of the car in case of a roll over. This new intake layout also enriches the driver's W16 experience, emphasizing the orchestra between the low down, mighty, rumbling 8-liter displacement intake noise at throttle on and the blow off valve whistle from the four turbo chargers at throttle lift. It is an unmatched aural sensation in the automotive world.

To develop incomparable levels of elegance and excitement, the W16 Mistral features the very latest engineering innovations. Bugatti's advanced composite materials are paired with cutting-edge titanium and aluminum 3D-printing to ensure striking design, ultimate performance and robust reliability. A detailed analysis of the W16 Mistral's dynamic stiffness allowed engineers to develop lightweight solutions that would ensure optimum handling and performance under the most extreme conditions.





The W16 Mistral's interior takes its lead from Chiron, carefully honed to deliver an experience that's both elegant and luxurious, but also functional enough to ensure all information is easily visible at up to 420 km/h. The dedication to material quality remains a hallmark of Bugatti design; advanced, lightweight titanium, aluminum components milled from a solid block and soft, blemish-free leathers. But in this swansong to the W16, there are also brand new design flourishes.

There is an intricate woven leather used on newly designed door panels, meticulously tested and produced to Bugatti quality standards with a vision of regular use over a hundred years into the future. And in a nod to the W16 Mistral's illustrious forebears, the gear shifter – machined from a solid block of aluminum – features a touch of wood and an amber insert with Rembrandt Bugatti's famous 'dancing elephant' sculpture locked within. Iterations of this sculpture adorned the bonnet of the legendary Type 41 Royale; the most luxurious roadster ever created.

Underneath the gargantuan side opening hood of the Royale was an ambitious 12.7-liter straight-eight engine, the likes of which the world had never seen before. And the W16 Mistral's engine is equally ambitious – the only W16 powertrain in automotive use today.

When Bugatti's last roadster, the Veyron 16.4 Grand Sport Vitesse set a world speed record of 254.04 mph (408.84 km/h) in 2013, its 8.0-liter quad-turbo W16 had 1,200 PS. The W16 Mistral has 1,600 PS, making use of the same power unit that propelled the Chiron Super Sport 300+ to a world-record-breaking speed of 304.773 mph in 2019. There can only be one goal in mind: to become the fastest roadster in the world once more.

Mate Rimac, Bugatti Rimac CEO, said: "The union of a roadster format and our W16 powertrain is absolute perfection. With the roof removed, and a pair of large air intakes directly behind your head feeding around 70,000 liters of air through the engine every minute at full bore, driving the W16 Mistral connects you to the intricate workings of this revolutionary powertrain like no other Bugatti to date.

"What we also continue with W16 Mistral is a legacy of Bugatti roadsters, each of them incomparable in design, performance and rarity, which stretches right back to the genesis of Bugatti. The Type 40, Type 41 Royale, Type 55 Roadster, Type 57 Roadster Grand Raid that inspired this car, or even the incredible elegance of the Type 57SC Corsica Roadster – Bugatti has always been associated with the purity of open top driving. So even though the legacy of the roadgoing W16 ends with the W16 Mistral, we continue the legacy of the roadster, first established by Ettore Bugatti more than a century ago."

Only 99 examples of the W16 Mistral will be built, priced at 5 million euros net, with deliveries due to begin in 2024. The entire production run of W16 Mistral is already sold out.



TRANSCENDING HOUSTON  
INTO THE

LUXURY REAL ESTATE  
FUTURE



Morad Fiki  
#1 Houston Realtor on Social Media

*Morad Fiki*

FIKI | FUTURE  
PROPERTIES GROUP REAL ESTATE

HOUSTONLUXURY REALESTATE.COM

THE PREMIER WEBSITE FOR LUXURY HOMES IN HOUSTON, TEXAS



## POST OAK MOTOR CARS MONTEREY CAR WEEK



Every August our Post Oak Motors team travels to Carmel, California for our annual excursion to the remarkable Monterey Car Week alongside our esteemed clients. For five days our team engaged, entertained, and reveled in an up-close encounter with some of the most extraordinary vehicles the world has to offer.

Among the standout occasions during this yearly extravaganza are The Quail and the Concours d'Elegance. The Quail, an event we eagerly anticipate, holds a special place in our hearts. Running from 9 am to 4 pm, it unfolds as a complete day immersed in the unveiling and showcasing of the latest creations from major ultra-luxury and supercar manufacturers. A diverse array of classic marvels, unique specimens, and hypercars also make appearances, creating an atmosphere where luxurious dining tents, effervescent champagne, and elegant individuals seamlessly blend against the backdrop of scenic Carmel, California.

A pinnacle of the week is the prestigious Concours d'Elegance at Pebble Beach, culminating the sequence of events and celebrations during Monterey Car Week. For 72 illustrious years, this concours stands as the world's preeminent ode to the automobile, a must-attend affair for any auto enthusiast.

Annually, the finest collector cars convene on the 18th fairway of Pebble Beach Golf Links, vying for the coveted title of Best of Show – an ultimate accolade in the realm of automobiles. Elegance, technical excellence, and historical significance are meticulously evaluated by experts, drawing crowds from all corners of the globe who passionately rally behind their favorites.

Before entering the concours, the legendary Hole 1 hosts Casa Ferrari, transforming the lawn into a grand showcase adorned with an impressive array of Ferraris spanning vintage to modern eras. As if these two events weren't enough to satiate our automotive appetites, the festivities overflow into manufacturer-hosted soirées at their private estates, captivating auctions, smaller-scale car exhibitions nestled throughout the town, exhilarating rallies, and more.

Monterey Car Week stands as an indispensable experience for anyone who holds a deep affinity for automobiles. To immerse yourself in this spectacular event, consider reaching out to our Head of Marketing, Diane Caplan. Secure your spot on the waiting list for Post Oak's highly anticipated 2024 Monterey Client Experience packages, set to be unveiled soon. Join us on this unforgettable journey.

Contact: Diane Caplan at [dcaplan@postoakmotors.com](mailto:dcaplan@postoakmotors.com)





# WORLDWIDE EXECUTIVE CHAUFFEUR SERVICES

LIMOUSINE SERVICES | CORPORATE TRANSPORT | EXOTIC CAR RENTAL  
CONCIERGE SERVICES | EVENT TRANSPORTATION  
PRIVATE CHARTER | VALET SERVICES

DIRECTTS.COM | 713.800.5466 | 877.546.6107 | @\_DIRECTTRANS





Warm and inviting interiors. Furniture made to last. You can combine design, comfort and beauty with performance. Easy to care for textiles on hand-carved chairs, painted chests, polished burl woods, chinoiserie and wicker are a wonderful mix, allowing one to add a single piece to an existing plan or do an entire room.

Visit Meredith O'Donnell Fine Furniture and Hickory Chair Houston to see the newest designs in stock and on sale now.

Member of HOUSTON DESIGN DISTRICT

*Meredith O'Donnell*

Fine Furniture, Accessories & Rugs

7150 Old Katy Road | Houston, TX 77024 | 713.526.7332 | meredithodonnell.com





**LANDRY'S**  
DINING • HOSPITALITY • ENTERTAINMENT • GAMING

**SUPER CARS AND SUPER JETS AT THE  
POST OAK COLLECTION'S RIDES AND  
ROCKETS EVENT**



On the 6th of May, an exclusive event took place, hosted by The Post Oak Collection team. This gathering brought together clients of Post Oak Motor Cars and a select group of VIP supercar owners for a memorable morning meetup at Tilman Fertitta's personal hangar.

The ambiance was nothing short of extraordinary, with an impressive display of luxury cars ranging from the opulent Bentley and Rolls-Royce models to high-performance supercars. The lineup was truly exceptional, featuring prized possessions like the McLaren Speedtail, Ferrari 812 Competizione, and even Tilman's very own Bugatti Chiron.

The event kicked off with a warm and inviting atmosphere as guests indulged in conversations and camaraderie, while enjoying freshly brewed coffee, mimosas, and a delectable breakfast spread courtesy of The Post Oak Hotel.

As the morning progressed, the excitement escalated as attendees were offered an exclusive opportunity to explore the Fertitta fleet, including an up-close and personal tour of the renowned Houston Rockets jet and other impressive aircraft housed in Tilman Fertitta's private hangar.

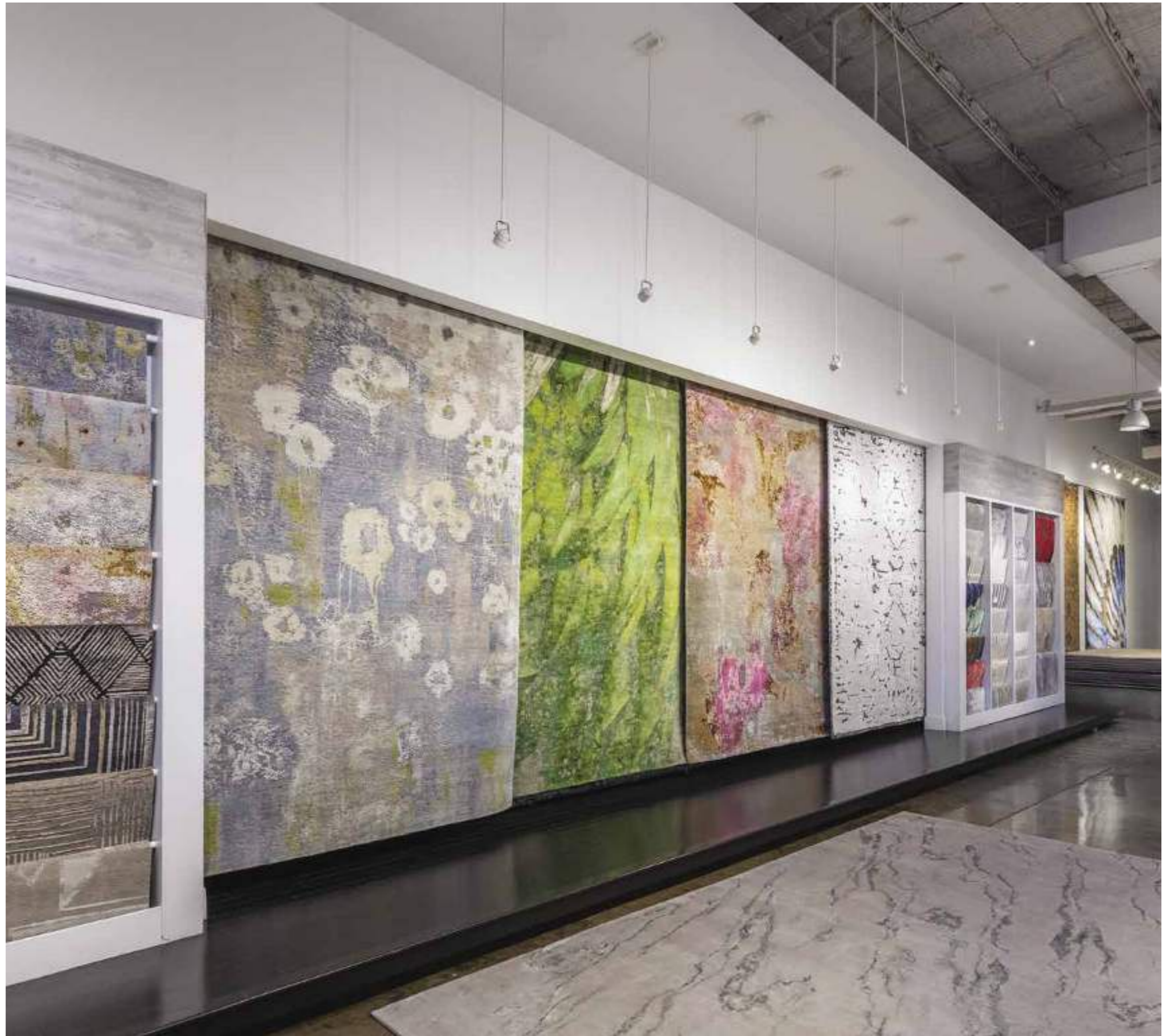
This gathering provided the perfect setting for like-minded individuals to connect, share their passion for luxury automobiles, and marvel at the awe-inspiring collection of rare and exceptional vehicles and aircraft. The mix of supercars, hypercars, and private jets made for an unforgettable experience.



1727 Post Oak Boulevard  
Houston, Texas 77056

713.338.2803

[MADISONLILY.COM](http://MADISONLILY.COM)



madison lily rugs



## THE POST OAK HOTEL AT UPTOWN HOUSTON PENTHOUSE

Houston billionaire and The Post Oak Hotel owner Tilman Fertitta and his design team created the overindulgent, 22,000 square-foot, two-story masterpiece – one of the most expensive penthouses in the world. Perched atop Houston's only Forbes Five-Star hotel, the \$125,000-per-night, five-bedroom mansion was built 33 floors up in the sky with floor-to-ceiling windows offering breathtaking 360-degree views of Space City.

The panoramic view was the inspiration to this glimmering domicile, where no detail or material was overlooked. The two-story sprawling penthouse incorporates 108 hand-selected slabs of marble, 23 custom chandeliers with more than 20,000 crystals, 28 televisions, 17 original pieces of artwork, 12 handmade rugs, top-of-the-line custom furniture, and state-of-the-art technology system controlling everything from lighting and drapery to speakers and security.

### AN OVER-THE-TOP LUXE PENTHOUSE

Walking off the private elevator, an original Brian Portman masterpiece and a 20-foot, amber-crystal chandelier immediately welcome guests to the mega-priced, home-away-home. Passing the floor-to-ceiling Saint Laurent marble door, the overwhelming sensation of high luxury surmounts.

The scale of the open room and its monumental floor-to-ceiling windows set the tone for refined elegance. Eyes are drawn to the 2,000-crystal chandelier rising above the hand-ebonized walnut dining table designed by New York's renowned Helman Chang, accompanied by custom shagreen Osbourne & Little velvet chairs.

The luxuriant resident may consider cooking during their stay with the world's largest kitchen island spanning 17 feet and encased in crystalize quartz stone. The penthouse's fully-equipped kitchen features Miele appliances, Subzero refrigeration units and Hoshizaki icemakers that all mirror the space's contemporary style. If a private chef is preferred, the penthouse is supplemented with separate prep areas for a caterer's kitchen and snack pantry with accommodations for a 24-hour butler and housekeeper services.



The expansive open-air living space is divided by a double-sided TV that ascends from a discreet console and can be seen from all angles.



An enormous velvet-cream sectional fills the living room inviting guests to gather comfortably. The space is complemented with a Texas-sized Edelman leather ottoman, Holly Hunt peso gray marble and oak side tables, and two custom lounge chairs with Kravet tailored Italian velvet fabric.

A 90-inch television is built into a Madagascar ebony wood display where floating shelves with glass sculptures sit gleaming. An astounding floor-to-ceiling fireplace encased with Taj Mahal marble is flanked by floor-to-ceiling windows that overlook the private terrace, which provides

astounding views of East Houston. This fireplace can be accessed from the interior and outdoor terrace.

Adjacent to the living room is the billiards room featuring a contemporary Madagascar ebony pool table with black felt lining, marbled pool balls, Scorpion black and cherry wood pool sticks, and custom agate stone trays. Three marbles - Taj Mahal, Agatha Black, and Gun Smoke Onyx - were selected for this area alone. While playing pool, guests can serve cocktails from the Agatha black waterfall-styled island displaying only top-shelf liquor on a backlit onyx wall. The full-service bar offers two large wine cabinets holding more than 300 bottles of the world's most prestigious vineyards and chateaus. Penthouse residents also have direct access to the hotel's on-site Master Sommelier, one of only 269 in the world.

Transitioning through the Swiss-designed, Sky Frame sliding doors to the wraparound, 3,000 square-foot private terrace, guests absorb the pinnacle view of Downtown Houston skyline.



Penthouse Suite offers two well-appointed outfitted bedrooms fit for a VIP. Both guest rooms offer King-size beds, deluxe five-fixture bathrooms, oversized custom walk-in closets with individual safes and original art pieces by Helen Frankenthaler and Brian Portman.

Overhead speakers are located throughout both floors, and everything, including the drapery, works via a state-of-the-art Creston panel. All lighting levels are set specifically by the designer and integrated into a control panel to be put on Night, Day, and Evening settings.

### THE IMPERIAL MASTER SUITE

Entering the wood-encased master vestibule, a sizeable 42-by 42-inch original Rick Lowe painting welcomes the fortunate resident to their private palace. The opulent manse is adorned with crystal chandeliers, pearl Calcutta marble flooring, silk fabric wall panels, and 100% silk carpeting. The King-sized bed is covered in detailed welted pillows in soft fabrics of bronze, orange, and camel, and accented

Surrounded by topiaries and glass railing, a heated, 500-square-foot infinity swimming pool and two hot tubs glimmer as if floating in the sky.

A large leaf sculpture brings The Post Oak Hotel's iconic tree to the forefront conceptually. Two large waterfall, marble islands flank each side of the alfresco terrace. One is a full bar while the opposing offers a complete

outdoor kitchen with Teppanyaki grill and heated lamps for entertaining. Custom outdoor lounge seating was designed by Phillippe Starck from Sutherland and are comfortably balanced with a Brown Jordan natural stone fireplace. The terrace also features a custom dog run allowing furry friends to enjoy outdoor time without ever leaving the suite. If extending hospitality to guests, the



Lance Rosmarin • Luisana Oelfke • Natalie Wall • David M Young • Amber Griffin • Rosemary Gaswint

Young Realty Group is Houston's premier luxury residential real estate team, delivering expert guidance since 2002.

4722 Waring St  
Afton Oaks



\$2,800,000 ML #: 20619739  
Yr Built: 2006 Bed/Bath: 6 / 5 & 2  
SqFt: 5,829 Lot Size: 9,180 SF

2429 Southgate Blvd  
Rice University Area



\$2,500,000 ML #: 30587696  
Yr Built: 2008 Bed/Bath: 4 / 4.5  
SqFt: 5,838 Lot Size: 6,600 SF

2727 Kirby Dr #19F  
Upper Kirby/River Oaks



\$2,250,000 ML #: 77816776  
Yr Built: 2008 Bed/Bath: 2 / 2.5  
SqFt: 2,987

COMPASS

#1 in River Oaks  
#1 in Houston  
#1 in Texas



For More Information: David M Young, Broker Associate  
713-320-6453 • www.youngrealtyhouston.com  
4200 Westheimer Rd Ste 1000 Houston, TX 77027



with a cast bronze Holly Hunt bench. A large geode stone sculpture and two soft-white Michael Alexander velvet chairs are seated in the corner next to an original Robert Motherwell that unifies the surrounding architectures and furnishings.

The lavish, all-marble master bathroom is encased in three different marbles: Perla Venata, For Di Basco, and Crystallize. From the emperor-sized bathtub and shower to its master vanity and heated floors, every inch is covered in marble. Master suite residents also have access to a secluded 560-square-foot terrace with outdoor seating for two, personal hot tub, and towel and robe storage.

There is no comparison to the his-and-hers, 700-square-foot master closet. From men's storage of watch winders, ties, belts, boots, a pull-out ironing

board, and glass doors for coats and shelving for 56 pairs of shoes, no detail was overlooked.

“ *Designed and suited for a billionaire, the master study is equipped with a high-gloss, Helman Chang custom-designed desk handcrafted with ebonized walnut where its clean lines and facets reflect black nickel and burnished bronze from the overhead chandelier.* ”

Her side is a dream come true with shelving for more than 100 pairs of shoes including custom boot storage, glass-beveled dividers for every purse size imaginable, black-velvet dividers to keep jewelry in pristine condition, glass doors for coats and dresses, a large vanity mirror and hanging crystal chandelier. The master

closet provides separate storage areas for luggage, a personal washer and dryer, and private office space with a computer desktop, printer, and fully stocked desk accessories.

For those seeking a quiet hideaway, the master suite is supplemented with a private den furnished with two large recliners, a 70-inch television, Suzanne Kasler crystal chandelier, a personal Fischer & Paykel refrigerator drawer, Keurig coffee maker, and a Robert Motherwell original painting. The master's en-suite massage room provides a Nuage pedestal and studio massage table where guests can request a service or treatment from The Post Oak Hotel's Forbes Five Star rated Spa – the only spa in Texas with this prestigious honor. Evoking tranquility, the room is surrounded by silk wallcoverings adorned with



pressed leaves and a cream agate stone chandelier. Designed and suited for a billionaire, the master study is equipped with a high-gloss, Helman Chang custom-designed desk handcrafted with ebonized walnut where its clean lines and facets reflect black nickel and burnished bronze from the overhead chandelier. The desk chair is the exact chair The Post Oak Hotel owner and Texas billionaire Tilman Fertitta uses in his executive office. Four lounge chairs upholstered in Mokum velvet sit in the corner with a floor lamp offering ambient lighting and an original Terrell James painting. Built-in shelving with ebony Madagascar millwork is lined with a 75-inch television, a curated collection of books from iconic publisher Assouline, and crystal picture frames of Houston's iconic architectural landmarks.

#### AN ENTIRE FLOOR OF ENTERTAINMENT - 32

The two-story penthouse also houses an entire entertainment complex. Since The Post Oak Hotel owner is also the owner of the NBA's Houston Rockets, the 32nd floor is basketball-themed, over-the-top extravagant, and

unlike any other in the world. Descending to the 32nd floor on the pearl marble floating staircase, guests are welcomed by a jaw-dropping custom graffiti sign reading "Clutch City" that is completely made from painted basketballs.



In the open entertainment room, an oversized oval-shaped, black marble, fully-stocked bar rests on top of the Calcutta and Nero Marquina marble flooring. Hand crafted crystals hang overhead from a faceted wood ceiling while its floor-to-ceiling windows bring in natural light that can turn into a nightclub experience by nightfall.

Two large barn doors with custom Holly Hunt fabric panels lead to a world of leisure, recreation, and games.

Guests can watch live sports or the latest Hollywood hits in the personal 12-seat theatre room where portraits of Marilyn Monroe and Al Pacino hang on Gilford and Maine fabric wall panels that absorb every acoustical sound. Sixteen Cinematech black leather lounge chairs are lined across low-lit aisles with a popcorn machine, an assortment of candies and a fully stocked refrigerator. Glass doors encased in marble guide guests to a regulation-sized, shiny Houston Rockets branded, half-court basketball playground – complete with scoreboard and large screen TV for live sports viewing. The space also incorporates a full-service fitness room with Peloton and Technogym equipment.

After a heated game of one-on-one or a private workout session, guests can unwind in their own locker room which features a steam shower fit for eight people, two restrooms, lockers filled with every amenity imaginable, and large screen TV.

Additional games available include a floor-to-ceiling mural of the iconic Augusta golf course that offers an interactive putting green that tactically moves to create hills and valleys for a competitive putting match; arcade basketball hoops, foosball table, and a shuffleboard.

To allow for more guests staying overnight, the entertainment floor also provides a two-bedroom suite equipped with a dining room, living room, fully-stocked wet bar, five-fixture deluxe bathroom, and walk-in closets – all mirroring the level of luxury and exceptional taste as the 33rd floor. A private elevator also provided for easy access between floors. The Post Oak Hotel at Uptown Houston is located at 1600 West Loop South.

To reserve the Penthouse or a guest room, call **844.386.1600** or visit [thepostoak.com](http://thepostoak.com).



**L'Atelier Paris**  
HAUTE DESIGN

# The Art, Craftmanship & Excellence of Haute Cuisine

Handcrafted Custom Made Cooking  
Ranges & Suites, Steel Cabinetry, Fine  
Wood Working, Appliances & More

[www.leadelierparis.com](http://www.leadelierparis.com)  
1 800 792 3550

NEW YORK • MIAMI • LOS ANGELES • DALLAS





**NEW FEATURES FURTHER  
INCREASE DESIRABILITY OF  
BENTAYGA RANGE**

# Switzerland

## Wealth Management for U.S. Clients from Switzerland

Our clients are at the center of what we do.

We see ourselves as a strategic partner and our strength is delivering bespoke investment solutions for high net worth U.S. clients.

Our team understands the importance of individuals and families seeking international diversification.

We focus on tailor-made solutions to meet your financial needs.

Address: Tödistrasse 16, 8002 Zürich

Phone number: +41 43 244 75 50

Fax number: +41 43 244 75 51

Email: [info@belvoirwealth.com](mailto:info@belvoirwealth.com)

[www.belvoirwealth.com](http://www.belvoirwealth.com)

**BELVOIR**  
WEALTH MANAGEMENT ●●●

Belvoir Wealth Management AG (BMW) is an SEC-registered investment adviser. Registration as an investment advisor does not constitute an endorsement of the firm by securities regulators, nor does it indicate that the advisor has attained a particular level of skill or ability. Belvoir Wealth Management AG is a FINMA authorized asset manager pursuant to Art. 17 para.1 FinIA. Authorization as an asset manager does not constitute an endorsement of the firm by financial market regulators, nor does it indicate that the manager has attained a particular level of skill or ability. For additional information about our services and fees, please refer to our Form CRS and our Form ADV disclosure brochure available through the SEC's website <https://www.adviserinfo.sec.gov/> or by contacting us.



Bentley Motors is today announcing the introduction of a collection of new features making its luxury SUV range more desirable than ever. The second generation Bentayga was introduced in 2020, with additions of further performance and luxury versions, the Bentayga continues to be the most successful luxury SUV range so far.

With the exterior of the car remaining fresh, the scope for increased personalisation has been pushed even further with an additional exterior colour, seven new satin paints and a new 21" wheel option in three different finishes. Priority has been given to the driver and passenger experience with new chassis technology, new electrical architecture and additional features, including a reprofiled front radiator grille. The introduction of all wheel steering to the Bentayga Extended Wheelbase increased handling and manoeuvrability whilst also reducing the turning circle by nearly 1m. This system is now included as standard on both the Bentayga Azure and 'S' models, and optional on the rest of the range.

One out of every two Extended Wheelbase customers chooses the Airline Seat Specification, including Postural Adjust and Seat Auto Climate, and this world-leading technology is now available as an option on all standard wheelbase Bentaygas. After a rear seat passenger selects their desired temperature from seven different levels, the auto climate seat senses passenger temperature and surface humidity with an accuracy of 0.1°C every 25 milliseconds.



The system can then determine whether to apply heat, ventilation or both simultaneously to keep the passenger at optimum thermal wellbeing. Meanwhile, the postural adjustment system automatically makes micro adjustments to the passenger's seating position and pressure points, using an algorithm developed in collaboration with a chiropractor. The system can apply 177 individual pressure changes across six fully independent pressure zones over a three-hour period improving comfort and minimising fatigue throughout a journey. By subtly changing the shape of the surfaces of the seat over time, no one area of the body endures pressure fatigue for an extended period – meaning the occupant is always comfortable.

Driver assistance features have also been enhanced with the inclusion of Intelligent Park Assist (including remote parking), 3D Surround View and Emergency Assist. Adaptive Cruise Control, Lane Departure Warning and Bentley Safeguard have also been bolstered further.

A number of these new driver aids are displayed in the driver's instrument panel which also now offers three new dial styles with an additional unique style specific to the model of Bentayga. The new driver instrument panel also includes real time visualisation of the road ahead, a 3D depiction of detected objects (including an image of the Bentayga with interactive exterior lights) and a status of the driver's assistance features.

Connected Car features now include remote park assist, enabling the remote operation to start and stop the engine and manoeuvre the car when within 3.5 meters, via a smartphone.

For cabin comfort, the air conditioning has also been improved. The new system uses the particle matter sensor to measure the air quality inside and outside of the car. This is displayed on the central infotainment screen and automatically activates 'recirculation mode' preventing pollution from enter the cabin. The system returns back to fresh air mode when appropriate. The new system is deactivated automatically when rear occupants are not detected, reducing airflow noise to the rear and energy usage.

Using map data the system knows when the car is about to enter a tunnel and therefore where higher pollution is anticipated. Ten seconds before entering the tunnel the system switches to recirculation mode to prevent pollution entering the cabin. On exit, the system reverts to fresh air mode unless a further tunnel is within 20 seconds.





**LONDON HOUSE**  
RIVER OAKS



**ONLY 9 RESIDENCES REMAIN - MOVE IN AUGUST 2024**

The 12-story London House will soon rise on San Felipe overlooking the estates of River Oaks. Inspired by the traditional Architecture of London, this highly curated boutique mid-rise offers customized homes ranging in size from 2,400 to 4,400 square feet. Interior features include decadent fireplaces, high-end kitchen cabinetry by the well-established Eggersmann, a vast selection of stones, porcelains, and European Oak wood flooring, all to your design specification.

713.678.0700 • [LondonHouseHouston.com](http://LondonHouseHouston.com) • 2323 San Felipe. Houston, TX 77019

presented by RANDALL DAVIS COMPANY

Notwithstanding any other information (including, without limitation, any marketing, sales, advertising, brochures, or similar information), all prices, building design, architectural renderings, plans, amenities, features and specifications or any and all improvements to any part of the condominium or property are subject to change or cancellation without notice.



The standard cabin carpets across all models have also become more sustainable. The new cabin carpet is now 100 per cent recycled nylon delivering the same level of comfort and feel of previous carpets.

The isolated cabin makes for a perfect sound stage for the latest audio offering for Bentayga, 'Bang & Olufsen for Bentley'. The iconic design of the B&O speaker – finished in aluminium with holes drilled in variable sizes and angles and shaped to a uniquely-designed Fibonacci hole pattern, are elegantly displayed on each interior door panel. The angled holes are placed as tightly as possible to achieve the best acoustic transparency and to build a contrast to the glass-pearl blasted surface.

New for the Bentayga EWB, the Styling Specification amplifies what is already a striking presence. A larger rear spoiler both extends the roofline in profile and provides increased aerodynamic stability at speed. This is complemented with high gloss carbon fibre door mirrors, and side sills with unique exterior badging. Both bumpers receive carbon fibre additions, with a splitter to the front and a diffuser to the rear.

Eight new exterior paint colours have also been introduced across the range. Topaz, an intense blend of blue and green creating a sparkling turquoise jewelled appearance adds to the existing 112 colours already available.

Beyond the standard and extended palettes, Mulliner has curated a new premium range of satin paints. Providing an alternative look the new paints give a matt surface finish in the seven additional colours; Royal Ebony, Light Sapphire, Orange Flame, Alpine Green, British Racing Green, Cricket Ball and Candy Red.

This summer also brings a new elegant and contemporary 21" multi-spoke wheel. With a more elegant design the wheel is more suited to the luxury inspired models and is available in three different finishes. The intricately detailed wheel is offered in silver, black painted and bright machined, and a polished finish.

The Bentayga family now spans a range of 10 models each with a different emphasis, to make customer choice easier. The flagship Bentayga Extended Wheelbase Mulliner sits at the top of the range. Customers wishing to concentrate on driving pleasure can specify Bentayga S delivering exceptional dynamic performance and no expense to grand touring ability. For those prioritising wellbeing and on-board comfort, the Azure range provides a luxurious solution.

From September, a new additional cross car line joins the family. The new model simply badged as 'A', provides customers (in certain regions) a first stepping stone on the luxury-focused pathway between a standard car and an Azure.



The 'A' model is denoted from the exterior by a straight vanned front grille, black lower bumper grilles, 'A' badging and 21" black and bright machined wheels. To the interior of the cabin, the colour specification is standard allowing a choice of 15 colours of leather and colourways. The front seat comfort specification is also standard including massage, seat heating and ventilation as well as contrast stitching throughout the cabin and deep pile overmats. Three different open pore veneers are available to choose from, Crown Cut Walnut is the standard with Dark Burr Walnut and Koa as no cost options.

#### Increased dynamic ability

Electronic All Wheel Steering was first introduced to the Bentayga Extended Wheelbase maintaining the Luxury SUV's critical acclaim for its dynamic ability. It provided two highly desirable benefits and ensures no compromise between high-speed confidence and low speed convenience. Now the feature is available on all Bentayga models being standard on S and Azure and optional on all others.

At fast highway speeds the system makes small adjustments to the direction of travel of the rear wheels, in tandem with the direct steering inputs from the driver to the front wheels. This increases high-speed stability – making overtaking and lane changing more assured – and improves handling when driving through sweeping bends.

At low speeds, the All Wheel Steering has the effect of 'shortening' the wheelbase, reducing the turning circle, and increasing agility in tight urban environments making parking noticeably easier. This is achieved by steering the rear wheels in the opposite direction to the front wheels. The maximum angle the rear wheels turn is +/- 4.8 degrees to the centre line of car with a cut over between slow and fast operation at 37 miles per hour. The system provides a reduced turning circle by approximately 7% or 1 metre.

#### Bang & Olufsen for Bentley

Customers choosing the newest audio feature for Bentayga benefit from the iconic design of the B&O speaker grilles – finished in aluminium with holes drilled in variable sizes and angles and shaped to a uniquely-designed Fibonacci hole pattern. The angled holes are placed as tightly as possible to achieve the best acoustic transparency and to build a contrast to the glass-pearl blasted surface.

Another highlight is the LED illumination of the holes, which welcomes the driver when the system turns on. The Bang & Olufsen logo completes the unique speaker design and is debossed into the leather next to the grilles.

The interface features an eclipse design, and by moving a digital white marker the user chooses between the four different spaces. This enables the user to adjust the music according to their current mood – with a colour palette behind the eclipse reflecting the chosen sound mode. Surround intensity can also be adjusted with a pinching gesture, in the BeoSonic display. Additional settings can optimize the whole system for front or rear seat passengers.

Bang & Olufsen BeoSonic One-Touch Experience provides four distinct audio spaces: Bright, Energetic, Warm & Relaxed. The sound tuning of the spaces is adjusted to the driver's preferences through an easy-to-use, haptic touchscreen interface integrated into the multimedia system.

#### Luxurious sustainable materials

As standard for Azure and A models, the new deep pile overmats are more luxurious than ever. Using 100 per cent pure wool, the deep pile Wilton carpets have an exceptionally luxuriant, velvety feel. A specially-selected wool variety is used due to its cleanliness and purity in colour which is tested to ensure quality standards are met before use. Colour is applied via the method of hank dyeing, which allows better control of the quality of the dye and ensures improved colour matching as required. During the manufacturing process no bleach is used and therefore the end result is a beautiful quality finished carpet from pure wool. The deep pile overmats are also available in models as an option where not standard.

The standard cabin carpets across all models have also been made more sustainable. The new cabin carpet is now 100 per cent recycled Nylon delivering the same level of comfort and feel of previous carpet which previously utilised 100 per cent virgin Nylon material.





© CAMBRIA 2019 | 31762\_AD



CLARIDGE™



*Bringing your ideas to life ...  
It's what we do.*

## THE ART OF LIVING

For the ultimate Cambria® experience, visit our Cambria Premier Dealer showroom. We have the widest selection of Cambria designs to offer livable luxury with elegance, movement, and flow found nowhere else. You'll also find innovative displays to inspire your imagination and knowledgeable experts to answer all your questions to help bring your new Cambria kitchen or bath to life. Stop by Kitchen & Bath Decor today!

## KITCHEN & BATH —DECOR—

1707 S DURHAM DR, HOUSTON, TX 77007 | 832-620-1700 | KITCHENANDBATHDECOR.INFO



We are your one-stop-shop for all of your remodeling needs. We have a state of the art facility that has more than 30 displays of Kitchens and Bathrooms, creating a unique experience unrivaled by any other design firm. We are comprised of a close group of talented designers that are equip to help you will all of your design needs. Rest assured at Kitchen and Bath Decor that we are dedicated to providing an exceptional customer experience. We provide an exceptional installation, providing each of our clients with a superintendent that will over see their job, extracting all distraction of construction so our client can continue to do they do best. We offer 0% Finance for all of our projects with no payments for one year. We offer an exquisite design service using 20/20 design software to make your dreams come to fruition, with our software you are able to put your ideas on paper and make them a reality to enhance your luxury home. At Kitchen and Bath Decor, relationships with our clients is what matters most. We welcome you to become apart of our Family.



1707 DURHAM DRIVE | HOUSTON, TX 77007 | 832-620-1700 | KITHCENANDBATHDECOR.INFO

**BENTAYGA EXTENDED  
WHEELBASE MULLINER -  
BENTLEY'S NEW FLAGSHIP**





The launch of the Bentayga Extended Wheelbase Mulliner defines a new pinnacle for the Bentayga family and indeed the Bentley model range, adding a new level of modern craftsmanship to the already potent combination of supercar performance, go-anywhere ability, driving dynamics and limousine rear cabin of the Bentayga EWB. The flagship Bentayga EWB Mulliner offers more cabin space than any comparable luxury competitor and its bespoke enhancements make every journey an occasion to be savoured, equally as special from the driver's seat or the expansive rear cabin, providing the world's most luxurious SUV so far.

Unique design features inside and out make a striking statement, each one curated with painstaking care by the Mulliner team. The rear compartment, available in 4+1 and 4-seat configurations, features the Bentley Airline Seat specification – the most advanced automotive seating system in the world – as standard, to cosset occupants in unrivalled comfort. The Mulliner Harmony Diamond Quilt to the seats and doors demonstrates the craftsmanship that elevates the interior to a truly pinnacle position.

Using Bentley's extremely potent 542 bhp (550 PS) and 568 lb.ft (770 Nm) 4.0-litre V8 engine, the Bentayga EWB Mulliner combines limousine comfort with exceptional performance for a car in this class – a 180 mph (290 km/h) top speed and 0-60 mph in 4.5 seconds (100 km/h in 4.6 seconds). A chassis that includes Bentley Dynamic Ride (48V active anti-roll control), rear wheel steering and three-chamber air springs gives the Bentayga EWB Mulliner all of the dynamic ability of the standard wheelbase Bentayga, making the EWB Mulliner an accomplished driver's car as well as a luxurious SUV limousine.

#### **Elegant and distinguished**

The lines of the Bentayga EWB convey style and presence, and Mulliner's unique design features complement them perfectly. Exterior details include exclusive Mulliner 22-inch wheels in polished or grey painted and polished finishes, with self-levelling wheel caps that remain upright as the wheels rotate. Mulliner's distinctive "Double Diamond" front grille and chrome front lower grille are complemented by Mulliner wing vents, with two-tone mirror caps in Satin Silver and body colour.

Customers can order the car from launch with Mulliner Blackline Specification, which applies a gloss black treatment to all exterior chromework and mirror caps, but excluding the Bentley badges. A gloss black 22" Mulliner wheel completes the darker look.



Omega Wine Rooms has earned a reputation for providing custom wine cellar services to the Houston Metro Area in the form of wine cooling systems, custom wine racks, wine cellar repairs, wine cooling repairs and custom wine cellars that current customers have come to rely on. Proudly serving Houston, Bellaire, The Woodlands, Kingwood, Katy, Sugarland, Missouri City, Humble, Clear Lake and surrounds since 1999.

### Custom Wine Cellars

With a level of expertise and craftsmanship that is unmatched, we will help design and build your custom wine cellar to compliment your home or business.

### Wine Cooling Systems

Often overlooked, the temperature of your wine is critical to enjoying it. We design, install, service and repair custom cooling systems for your wine cellar, room or wall for optimal taste.

### Wine Room Repairs

It may be time to renew the wine storage in your home or business. We will assess the need for renovations to enhance your wine room or wine cellar with top-of-the-line features and materials.



When opening the doors, a welcome illumination is projected on to the ground, one of many subtle details that go beyond the everyday into a higher level of luxury.

### Curated three-colour combinations

Mulliner illuminated three-dimensional treadplates and deep-pile Mulliner overmats welcome passengers into the cabin, which is offered in a choice of eight three-colour combinations curated by the Mulliner Design team. The tri-tone split of main hide, secondary hide and accent colour hide are a Mulliner design signature and only available for Bentley's pinnacle models.

Each combination has its own title, from the fiery combination of Hotspur, Beluga and Linen that comprise 'Flare' to the deep blues and black of 'Storm' – the latter with an accent colour of White like a flash of lightning across a night sky. Customers can also specify their own Mulliner Bespoke Interior, using any three colours, producing nearly 4,000 tri-tone interior colour combinations.

Complementing the curated colours, Grand Black veneer trim showcases the mirror-finish polished surface achieved by Bentley's wood shop, with overlays of silver Mulliner lettering and the Bentayga silhouette to the passenger fascia, the Bentley 'B' on door waistrails and Mulliner chrome patterning on the rear picnic trays. A three dimensional diamond milled finish to the centre console provides another visual and tactile highlight.



By Appointment Only • T: 281.477.7859 • E: info@1800winerrooms.com  
11350 Jones Road West Suite B200 • Houston, TX 77065





On the seat uppers, Mulliner's intricate Harmony Diamond Quilt patterning consists of alternate lines of the secondary hide and accent colour, with the Mulliner namestyle embroidered on each seat. For the doors, lines of main hide and accent colour are alternated.

As a further thoughtful touch, owners will receive a Mulliner presentation key box and key pouches matched to their Bentayga's chosen three-colour combination. Olive Tan Leather and other sustainable materials.

Olive Tan leather is used extensively throughout the cabin. The distinctive feature of this leather lies in a sustainable tanning process that uses an organic by-product of the olive oil industry. Derived from waste water extracted during the olive pressing procedure, the tanning agent remains free of harmful metals, minerals and aldehydes.



JOYBOX  
FINE FLOWERS



Houston's original and premier boxed floral  
and Everlasting Rose destination



702A Spring Cypress Rd. Spring, TX 77373 • 832-840-5500

WWW.JOYBOXFLOWERS.COM



The technique requires less water than a conventional tanning process and also offers a higher concentration of renewable chemicals. The resulting organic leather is incredibly soft and worthy of the world's most sought-after luxury car brand. Bentley Motors is the first automotive manufacturer to use this industry-leading Olive Mill Wastewater (OMW) technology from the leather manufacture Pasubio SpA.

Olive Tan Leather is another milestone in Bentley's sustainable leather strategy. The British marque already uses leather hides that are a by-product of the meat industry and highly traceable. Annually, global leather production recycles an estimated 270 million hides that would otherwise go to landfill. Leather manufacturing is regarded as a safe, compliant and heavily regulated means of recycling a sustainable product.

As standard for Mulliner models, new deep pile overmats are more luxurious than ever. Using 100 per cent pure wool, the deep pile Wilton carpets have an exceptionally luxuriant, velvety feel. A specially-selected wool variety is used due to its cleanliness and purity in colour which is tested to ensure quality standards are met before use. Colour is applied via the method of hank dyeing, which allows better control of the quality of the dye and ensures improved colour matching as required.

During the manufacturing process no bleach is used and therefore the end result is a beautiful quality finished carpet from pure wool. The standard cabin carpets have also been made more sustainable. The new cabin carpet is now 100 per cent recycled Nylon delivering the same level of comfort and feel of previous carpet which previously utilised 100 per cent virgin Nylon material.

**Increased cabin comfort  
through innovation and technology**

Whether the owner chooses 4-seat or 4+1 seating, the Bentayga EWB Mulliner features Bentley's Bentley Airline Seat specification. This is the most advanced seat ever fitted to a car, with 22-ways of adjustment and world-firsts in a new auto climate sensing system and postural adjustment technology. In Relax mode the seat can recline to nearly 40 degrees, whilst the passenger seat simultaneously motors forwards and a beautifully leather-trimmed footrest deploys from the back of the front passenger seat. In Business Mode, the seat moves into its most upright position to make working on the move more comfortable. The auto climate seat technology senses occupant temperature and surface humidity and then determines whether to apply heat, ventilation or both simultaneously to keep the occupant at optimum thermal wellbeing.

The Postural Adjustment function uses new thigh and shoulder pockets, plus additional lumbar massage pockets, to subtly yet continuously change the shape of the seat to ease pressure points around the body, preventing dead spots and fatigue build up. The system goes beyond the 2D motions typical of adjustable seats, able to employ a three-dimensional twist to relieve pressure points. Six independent pressure zones can provide 177 adjustments every three hours to ensure that seat comfort is never compromised, regardless of the length of the journey.

#### **Bentley Diamond Illumination**

A further striking and elegant feature as standard for Bentleyayga EWB Mulliner is Bentley Diamond Illumination. The illumination effect is achieved using LEDs (12 on each of the front doors, 22 on each of the rear doors) that emit light through small perforations in the leather trim on the door panels. This is achieved by a combination of digital craftsmanship and precision technology.

Within each diamond, the flawless leather is perforated with holes of less than 1 mm diameter. Each hole has been digitally positioned with precision by one of Bentley's interior designers to achieve a cohesive overall design – the 'digital-crafting' process. The finished result is a beautiful, elegant and unique design.

The intensity and colour of the illumination through the trim can be controlled by the customer through the infotainment system and Touch Screen Remote. The feature is linked with the mood lighting to ensure consistent colour and intensity of light throughout the car. This dramatic feature can transform the interior feel and look of the cabin, especially at night.

#### **Beautiful instrumentation**

A Mulliner clock flanked by chromed bullseye air vents provides a focal point on the centre console, featuring a silvered face and a bezel in a technical knurled finish. This design is echoed in the driver's digital instrumentation, which features the same silvered finish and typeface for the numerals. The clock and instrumentation style are unique to the pinnacle Mulliner models.

#### **Effortless performance and dynamic capability**

The Bentleyayga EWB Mulliner is powered by Bentley's 4.0-litre, 32-valve dual twin-scroll turbocharged V8 petrol engine. The design concept of the V8 engine has delivered a high level of power and torque, whilst still achieving lower emissions and the best possible efficiency. Mated to an eight-speed automatic gearbox and powering all four wheels, the V8 offers effortless performance, developing 542 bhp (550 PS) and 568 lb.ft (770 Nm) of torque, resulting in a top speed of 180 mph (290 km/h) and 0-60 mph in 4.5 seconds (100 km/h in 4.6 seconds).





The new Bentayga has won critical acclaim for its dynamic abilities, with its performance on the road and its ride and handling universally praised. The Bentayga EWB Mulliner continues this ethos with the inclusion of Electronic All Wheel Steering and Bentley Dynamic Ride as standard.

Secondary ride comfort is another key variable that affects onboard wellness – the smoother the ride, the more calming the journey. At typical road speeds and in the crucial frequency range of 5 Hz to 20 Hz, the Bentayga EWB has up to 27 per cent lower secondary ride vibration than its competitors.

Electronic All Wheel Steering provides two highly desirable benefits and ensures no compromise between high-speed confidence and low speed convenience.

At faster speeds - above 37 mph (60 kph) - the system makes small adjustments to the direction of travel of the rear wheels, in tandem with the direct steering inputs from the driver to the front wheels. This increases high-speed stability – making overtaking and lane changing more assured – and improves handling when driving through sweeping bends.

At low speeds, - below 37 mph (60 kph) - the All Wheel Steering has the effect of 'shortening' the wheelbase, reducing the turning circle, and increasing agility in tight urban environments making parking noticeably easier. This is achieved by steering the rear wheels (up to +/- 4.8 degrees off centre) in the opposite direction to the front wheels. The system actually provides a turning circle which is smaller than that of the standard wheelbase Bentayga by 7 per cent.

#### **Bentley Mulliner**

Bentley Mulliner is Bentley's bespoke commissioning division and can trace its coachbuilding ancestry back to 1760. Synonymous with luxury, the new Bentayga EWB Mulliner joins the Flying Spur Mulliner, Continental GT Mulliner and Continental GT Convertible Mulliner – each at the very top of their model families.

In the world of Mulliner, anything is possible. Established to respond to the requirements of Bentley's most discerning customers, the bespoke division is renowned throughout the automotive world for crafting some of the most individual Bentleys ever created.



# ACPS



*The AESTHETIC CENTER for*  
**PLASTIC SURGERY**

LEADERS IN AESTHETIC PLASTIC SURGERY

Facelift | Necklift | Browlift | Eyelid Lift | Rhinoplasty | Facial Rejuvenation  
Tummy Tuck | Liposuction | Armlift | Bodylift | Hiplift | Buttlift | Butt Implants  
Breast Augmentation | Breast Lift | Breast Reduction | Breast Revision





## LOTUS ELETRE: TECHNOLOGY, PERFORMANCE AND LUXURY IN A SPACIOUS AND PRACTICAL PURE-ELECTRIC HYPER-SUV

The ongoing transformation of Lotus to a truly global performance business and brand has reached its most significant milestone yet – the arrival of the Eletre hyper-SUV. The Lotus Eletre is a striking and progressive new model, the first of a new breed of pure electric performance SUVs. It takes the core principles and Lotus DNA from 75 years of sports car design and engineering, evolving them into a desirable all-new lifestyle vehicle.

It's aimed at a new generation of Lotus customers; those who value the world-class dynamic performance and striking design which have always been part of the Lotus experience, and who also need a practical, versatile and spacious family-focused vehicle – one that's packed with the latest digital technology to make their driving life safer and more convenient.



The Eletre is a true Lotus. It takes the heart and soul of the latest Lotus sports car – the Emira – and the revolutionary aerodynamics of the all-electric Evija hypercar, and reinterprets them as a hyper-SUV. It delivers class-leading ride and handling, steering and aero performance – areas of automotive design and engineering where Lotus has both pioneered and dominated throughout its 75-year history, on road cars and race cars. It is also the epitome of beautiful design, efficient and elegant engineering solutions, embracing technology, the best craftsmanship, advanced materials, innovation and ingenuity, and pushing new boundaries. These are the very things which made Lotus great in the first place.

The Eletre's comprehensive standard specification includes active air suspension, continuous damping control, torque vectoring, Lotus Intelligent Dynamic Chassis Control, 22-inch 10-spoke forged wheels in silver with a diamond-turned finish (20-inch five-spoke in European markets), Matrix LED headlights, Adaptive Cruise Control, Visual Park Assist, four-zone climate control, 12-way electric-adjust front seats, head-up display, wireless Apple Carplay and Android Auto, and a 1,380W 15-speaker KEF Premium Audio system.

The Eletre S is focused on customers seeking luxury. The enhanced specification includes additional features such as soft door close, privacy glass, active rear spoiler, configurable ambient lighting, illuminated side sills, air quality system, 2,160-watt 23-speaker KEF Reference Audio system, and 22-inch 10-spoke forged wheels in grey with a diamond-turned finish.

The flagship Eletre R is all about performance, and benefits from the Lotus Dynamic Handling Pack (comprising Intelligent Active Roll Control and Active Rear Steering), Carbon Pack, Pirelli P Zero performance tyres, and a gloss black finish for the wheels.

## A technical tour de force

Lotus has always been one of the most innovative and technology-led automotive brands, and the Eletre is the culmination of 75 years of pioneering achievement in the fields of ride and handling, steering, aerodynamics and active systems. The result of an exhaustive global engineering development programme, the Eletre has been tested over more than one million miles in some of the harshest environments on earth, including on the challenging Nürburgring Nordschleife circuit in Germany. The Eletre fuses the fundamentals of Lotus dynamics DNA with cutting-edge chassis and driving safety technologies, state-of-the-art electric powertrains, plus a luxurious and spacious interior with world-class infotainment to deliver a new type of Lotus for enthusiastic performance car drivers worldwide.

With the Eletre, Lotus is delivering more innovation, more technology, more capability and more appeal than ever before. Offering a range of up to 600km (373 miles), the convenience of fast-charging from 10-80 per cent in just 20 minutes, and acceleration from 0-100km/h (0-62mph) in a breathtaking 2.95 seconds on the flagship R model, the Eletre takes full advantage of all the benefits electrification can offer and uses them to comprehensively enhance the driving experience.

## Exterior design: daring and dramatic

Embracing the creative freedom which comes from the absence of a petrol engine, the Eletre's dramatic form interprets 75 years of Lotus sports car design DNA into a stunning new theme befitting the brand's first all-electric hyper-SUV. It is characterised by a cab-forward stance, long wheelbase and very short overhangs front and rear. Overall, there's a visual

lightness to the vehicle, creating the impression of a high-riding sports car rather than an SUV. A signature element of the design is its 'porosity' – the aerodynamic principle of air flowing through the vehicle as well as under, over and around it. Porosity was at the heart of the Lotus Evija's design, is integral to the Emira, and has provided clear inspiration for the Eletre. It is most obvious where air is channelled under the leading edge of the vehicle, emerging through two exit vents in the bonnet.

There are other examples of porosity ahead of and behind the front wheel arches, behind the rear wheels, and even at the top of the D-pillar. For the driver, the benefits are clear: the reductions in aerodynamic drag that they deliver improve both performance and range.

At the front of the Eletre, the very sharp and crisp leading edge reveals a clear lineage with the Emira and Evija. It draws a distinct line across the very striking and contemporary design treatment below. There are further echoes of Evija in the layering of the surfaces, the creation of space and the optimised, streamlined performance.

## Lotus Eletre: a milestone car for a milestone moment

With the Emira confirmed as the final combustion engine Lotus sports car, the Eletre's significance as the first all-electric Lotus hyper-SUV is made all the more significant: it is a key milestone in the brand's dramatic transformation as it embraces a bold new electrified era. Lotus has always used technical innovation, advanced aerodynamics and lightweighting to create vehicles which set the class benchmark for performance, ride and handling. The Eletre proudly continues this tradition, but with a step-change in versatility and usability, ensuring that the Lotus brand appeals to driving enthusiasts around the world like never before.

Executive Protection, Intelligence and Investigation

What is your  
**COMFORT**  
**PRODUCTIVITY**  
**TIME**  
**SAFETY**  
worth?

What if you could improve  
them all at once?

Hendley Associates, a Woodlands, Texas-based leader in executive protection, provides safe and efficient travel and living to executives, VIP's, and high-net-worth individuals and their families. Hendley Associates is built from top-to-bottom with industry-leading best-practices to give clients a consistent, professional, customised, and SAFE daily experience...Every time.

Hendley Associates "flavour" of service within the security world is similar to Tier 1 Special Mission Units within the military; which is to say, we utilise the most intelligent/adaptable highly capable employees, specialized equipment and tactics, and real-time and advance intelligence services to provide truly customized and deeply thorough security solutions...that usually go unnoticed by the public.

Matthew Peringer  
HENDLEY ASSOCIATES  
The Woodlands, TX 77375  
Phone: (346) 225-6810

 Secure Transportation \* Secure Courier \* Exhaustive Security Assessments \* Full-Time Protection Personnel, and real-time protective intelligence are among the services provided.

Texas DPS Private Security License Number: C17854801







## EMIRA: THE MOST POWERFUL FOUR-CYLINDER LOTUS SPORTS CAR EVER

Captivating driving enthusiasts worldwide since its debut two years ago, the critically acclaimed and award-winning Lotus Emira V6 has secured its rightful place as the most accomplished Lotus sports car ever made. With striking design, astonishing performance and benchmark ride and handling, its supercharged 3.5-litre powerplant matched to a choice of six-speed manual and automatic transmissions delivers a driving experience that could only be from Lotus.

Now, the appeal of this mid-engined two-seater is further enhanced by the addition of a four-cylinder engine which features state-of-the-art technologies to deliver incredible performance and remarkable efficiency. Supplied by technical partner Mercedes-AMG, the all-aluminium, turbocharged 2.0-litre unit is based on the world's most powerful four-cylinder in series production. Badged for launch as the Emira First Edition, it has been further



developed by Lotus with new intake and exhaust systems, plus a bespoke calibration matched to new transmission shift-mapping. Developing 360bhp (365PS) and 430Nm, this makes it a perfect match to the Emira's lightweight, strong, stiff, bonded and extruded aluminium chassis structure and aligns to the Lotus ethos of delivering higher performance by reducing mass. It's also fitting that, as the final mainstream combustion engine Lotus two-seater, the Emira is the most powerful four-cylinder from Lotus in a rich bloodline of iconic models including the Elise, Esprit, Europa, Elan and Elite. And, at 180bhp/litre, it also has the highest specific power output in the Emira range. Like the renowned 400bhp supercharged V6, the four-cylinder car delivers all the performance and responsiveness that drivers expect – 0-62mph (0-100km/h) in just 4.4 seconds and a 180mph (290km/h) maximum speed – while bringing its own unique character to the Emira range. That character is enhanced by the inherent day-to-day usability and comfort of the smooth and rapid shifting dual-clutch transmission. It also offers the added advantages of lower fuel consumption and a target CO2 emissions figure of 208g/km

### **Vehicle dynamics: agile, intuitive, rewarding**

The Emira's light, stiff, bonded aluminium Lotus Sports Car Architecture gave the vehicle dynamics engineers the perfect platform from which to develop the car's ride, handling and steering characteristics, all of which set the class benchmark, as every Lotus sports car should. With a torsional stiffness of 26,300Nm/degree, the chassis contributes to the immediate, precise responses of every system. The Emira features race-derived, lightweight, forged aluminium double-wishbone suspension all round, which delivers the greatest control of the tyre contact patch throughout the suspension's full range of travel, contributing to the Emira's exceptional agility and responsiveness.

The introduction of the four-cylinder engine to the Emira range created the opportunity for Lotus to introduce a new, lightweight cast aluminium rear subframe to optimise the packaging of the powerplant within the chassis structure. It's in place of the steel assembly used on the Emira V6 and contributes to a total weight saving of 12kg. The subframe also houses the new rear suspension.

### **Exterior design: aerodynamically beautiful**

The Emira's design language is a development of the sculpted surfaces and technical detailing which debuted on the all-electric Evija hypercar, and brings unrivalled supercar desirability to the sports car segment. Strikingly beautiful, timeless and unmistakably Lotus, its perfect proportions and athletic, taught, shrink-wrapped form are the very embodiment of Lotus sports car DNA. Sculpted doors

feature deployable handles, also cutting drag, while the dramatic form pressed into the outer skin blends seamlessly into the intake ducts integrated into the muscular rear haunches. These feed air, via the water-cooled charge cooler, to the engine's intake system, and also help to cool the engine itself.

The rear of the car features two distinctive gloss black vents, allowing air to flow out from the wheel arches. Beneath, also finished in gloss black, is the rear diffuser, into which the two exhaust pipes and rear number plate are neatly integrated.

The Emira can be specified in a range of 13 colours, each one created to heighten the visual impact of the Emira's dramatic, purposeful form: Hethel Yellow, Magma Red, Vivid Red, Dark Verdant, Seneca Blue, Atlantis Blue, Meridian Blue, Osmium Silver, Nimbus Grey, Shadow Grey, Zinc Grey, Mist White and Cosmos Black.

The optional Black Pack sees a contemporary gloss black finish applied to the roof, cantrails, mirror pods and the Lotus wordmark on the rear clamshell. The exhaust finishers are satin black. The 20-inch, ultra-lightweight forged wheels feature a diamond-cut finish as standard, with silver or gloss black available as options, completing the distinctive look.

### **Emira inside: driver-focused and pure**

Luxurious, spacious and unmistakably driver-focused, the Emira's interior is beautifully crafted and effortlessly combines rich materials and the latest technologies to deliver levels of comfort, usability and practicality which set new standards for Lotus sports cars. Ahead of the flat-bottomed steering wheel is a 12.3-inch TFT instrument cluster, while in the centre of the cockpit is a 10.25-inch touchscreen for the infotainment system, which features integrated navigation\* All of the content was designed in-house, making it simple and intuitive to use, while enhancing the driving experience. Android Auto and Apple CarPlay connectivity is standard\*.

The 10-channel, 560W premium audio system was developed for the Emira in partnership with KEF and features the renowned British brand's signature Uni-QTM technology, which combines tweeter and mid-range into a single, acoustically-optimised unit. Beautifully finished with a distinctive bespoke speaker fret design, Uni-Q covers the entire mid and high-frequency sound spectrum from a single point in space, delivering a more coherent, hyper-realistic sound experience.

The 12-way power-adjust heated seats offer both incredible support for spirited driving as well as superb comfort on long drives, and are offered in Nappa leather in either black, red, ice grey or tan, or in black Alcantara with a choice of contrast stitching in either yellow, red or ice grey. These same materials are also offered on the steering wheel, as an option, with the top dead centre band and stitching available in yellow, red or ice grey.





LUXURY COMES STANDARD



WINNER



61 Carlton Woods Drive, Building 2, Suite 2100, The Woodlands, TX 77382

RESIDENTIAL · COMMERCIAL

LEVELTX.COM | CALL US 936-585-4011





## In Home Video Walls



Movies



Sports



TV Shows



Business



Video Games



Art



**MMC MEDIA INTERNATIONAL LTD**  
Innovative Creators of Publishing Excellence

We create the finest luxury digital and printed magazines for high profile clients around the World. We would be delighted to offer our bespoke services to your company as we do for the Post Oak Motorcars Pinnacle magazine.

Please view the previous edition here:  
[https://mmcmmedia.com/pinnacle23\\_flip/index.html](https://mmcmmedia.com/pinnacle23_flip/index.html)

Please contact Steve Streetly or Chris Shorley to discuss your requirements.

MMC Media International Ltd. Registered Office:  
54 Wood Street, Lytham St Annes, Lancashire, UK FY8 1QG

Chris@mmcmmedia.com | Steve@mmcmmedia.com  
T: (+44)1253 319882/3 or: (+44)1253 291688  
[www.mmcmmedia.com](http://www.mmcmmedia.com)



**FULL BEV SUPER COUPE HEADS KARMA  
AUTOMOTIVE'S NEW VEHICLE PORTFOLIO**

**KARMA**

# RIVER OAKS PAINT & BODY

Certified Collision Center



## River Oaks Paint & Body

A specialist in high line European automobiles and is a manufacturer certified collision center. We repair each vehicle that comes in as a fine automobile in that each car is repaired with high quality workmanship.



4603 Southwest Freeway Houston, TX 77027, just off of Newcastle and 59  
Tel: 713-523-4774 [www.riveroakspaintandbody.net](http://www.riveroakspaintandbody.net)



**"The Karma business is at a crucial juncture. We're relaunching and rebranding the company, producing some stunning, timeless vehicles that will lead the organization on a new journey."**

- Marques McCammon, Karma President

Karma Automotive revealed its new ultra-luxury vehicle lineup this today at the Wynn Concours in Las Vegas. The revamped portfolio from the Southern California electric vehicle and technology company is headlined by the Kaveya, a full battery electric (BEV) super coupe that will be available in two versions projected to go 0-60 mph in under three seconds.

"Karma has experienced its share of highs and lows during the past 10 years. I'm intent on fulfilling Karma's true potential," says Karma President Marques McCammon, who joined the automaker in March. "I was tasked with remaking the company, and today is only the first step toward establishing Karma as a high image marque - America's ultra-luxury vehicle.

"We're going to travel a path unlike other car companies. We are reintroducing the Karma brand and a vehicle lineup that is designed to age gracefully. We're also investing in technologies that will separate our vehicles from the masses, creating new and bespoke experiences that put the driver first and the technology in its rightful place as a supporting character.

"Undoubtedly, our plan is aggressive. After rolling out our initial new vehicles beginning in Q3 2024, we will debut new products and concepts every six months."

### A quick look:

Kaveya - EV super coupe GT featuring two versions with 250-plus mile range and butterfly doors: All-wheel drive, more than 1,000 horsepower, target speed more than 180 mph, available Q4 2026; and rear-wheel drive, 536 horsepower, available Q4 2025. "This is Karma's flagship, setting our corporate direction for the future," says McCammon.





## CONTACT

### UPTOWN

1501 W. Loop South  
Houston, TX 77027

936-251-5616

### THE WOODLANDS

1501 Lake Robbins Drive, Suite 180  
The Woodlands, TX 77380

346-483-2171

### COMING SOON - RICE MILITARY

5757 Memorial Drive  
Houston, TX 77007

[concierge@postoakmotors.com](mailto:concierge@postoakmotors.com)

# Jumper Maybach®

*Quantum Dream\**



*\*custom work - individual results may vary*



for information on custom wraps contact [sales@jumpermaybach.com](mailto:sales@jumpermaybach.com)

[www.jumpermaybach.com](http://www.jumpermaybach.com)

# Jumper Maybach®

*New Galaxy\**



*\*custom work - individual results may vary*



for information on custom wraps contact [sales@jumpermaybach.com](mailto:sales@jumpermaybach.com)

[www.jumpermaybach.com](http://www.jumpermaybach.com)



Deutsch  
FINE JEWELRY

# She's *Multi-faceted*

Explore timeless  
diamond essentials at  
Deutsch Fine Jewelry.

